



 **USGS**
science for a changing world

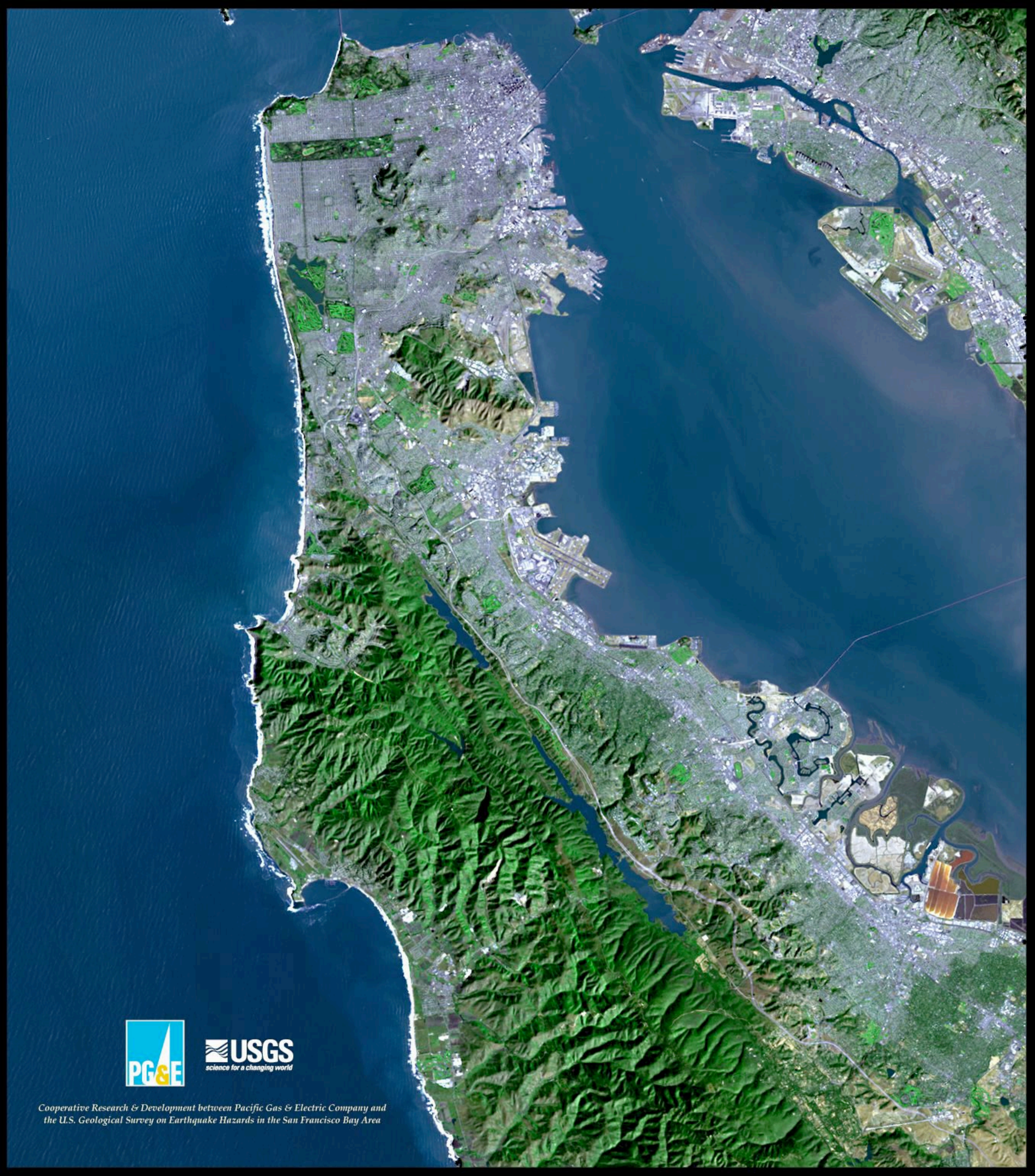
Pacifica



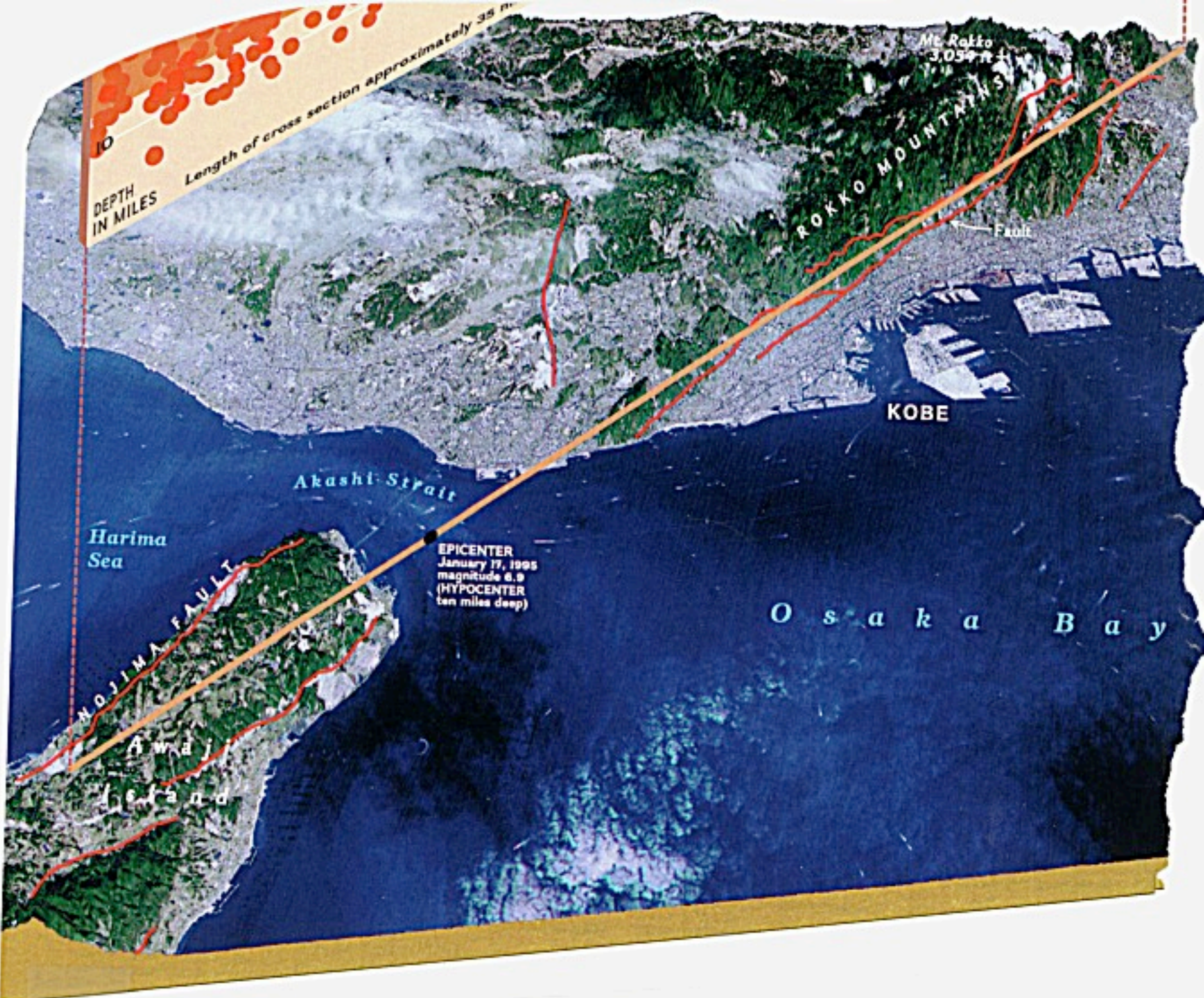
Debris flow hazard map



- Debris flow tracks, 1955 and 1982 storms
- Potential debris flow source areas
- Potential debris flow pathways
- Landuse "built" areas



Cooperative Research & Development between Pacific Gas & Electric Company and the U.S. Geological Survey on Earthquake Hazards in the San Francisco Bay Area



Mt. Rokko
3,059 ft

ROKKO MOUNTAINS

Fault

KOBE

Akashi Strait

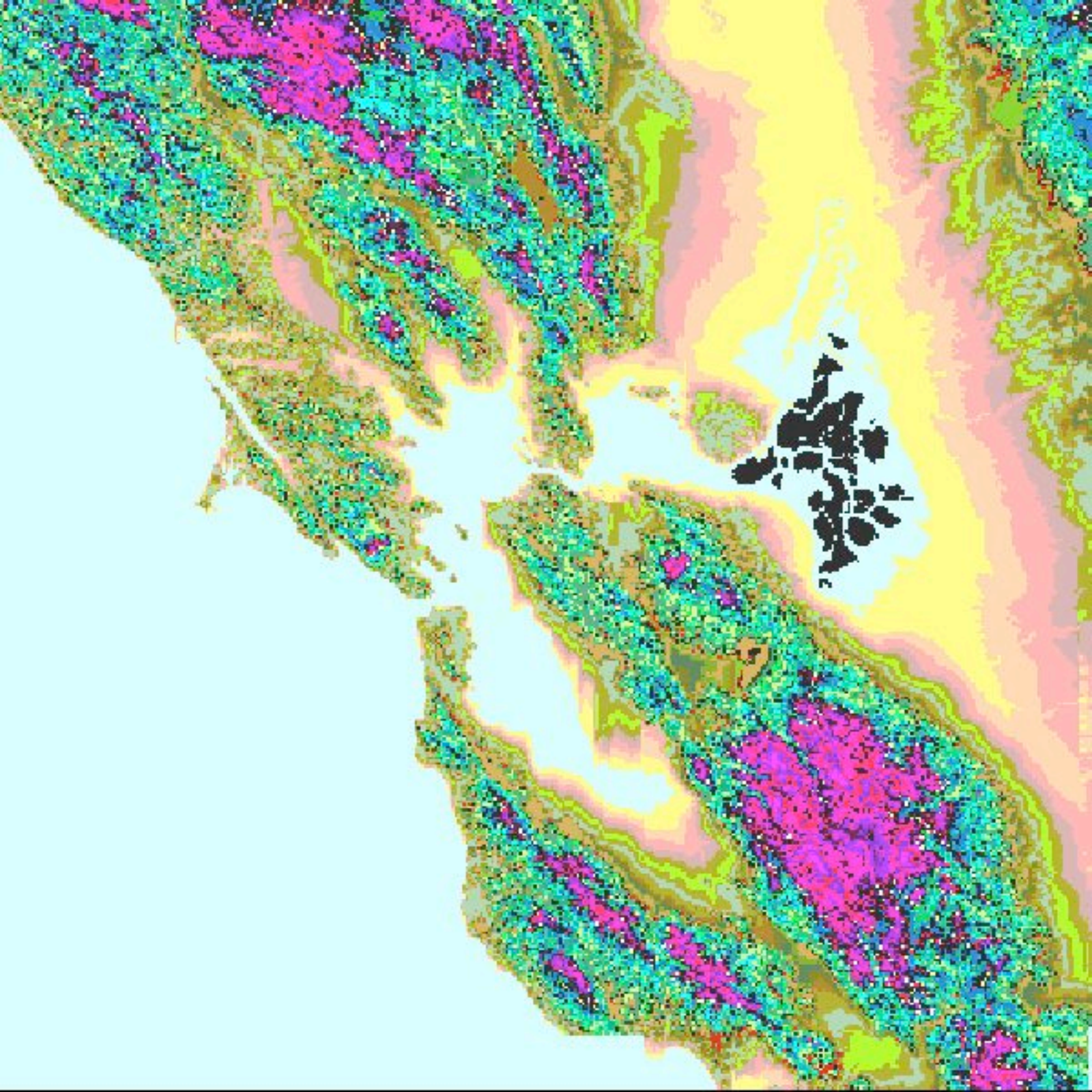
Harima
Sea

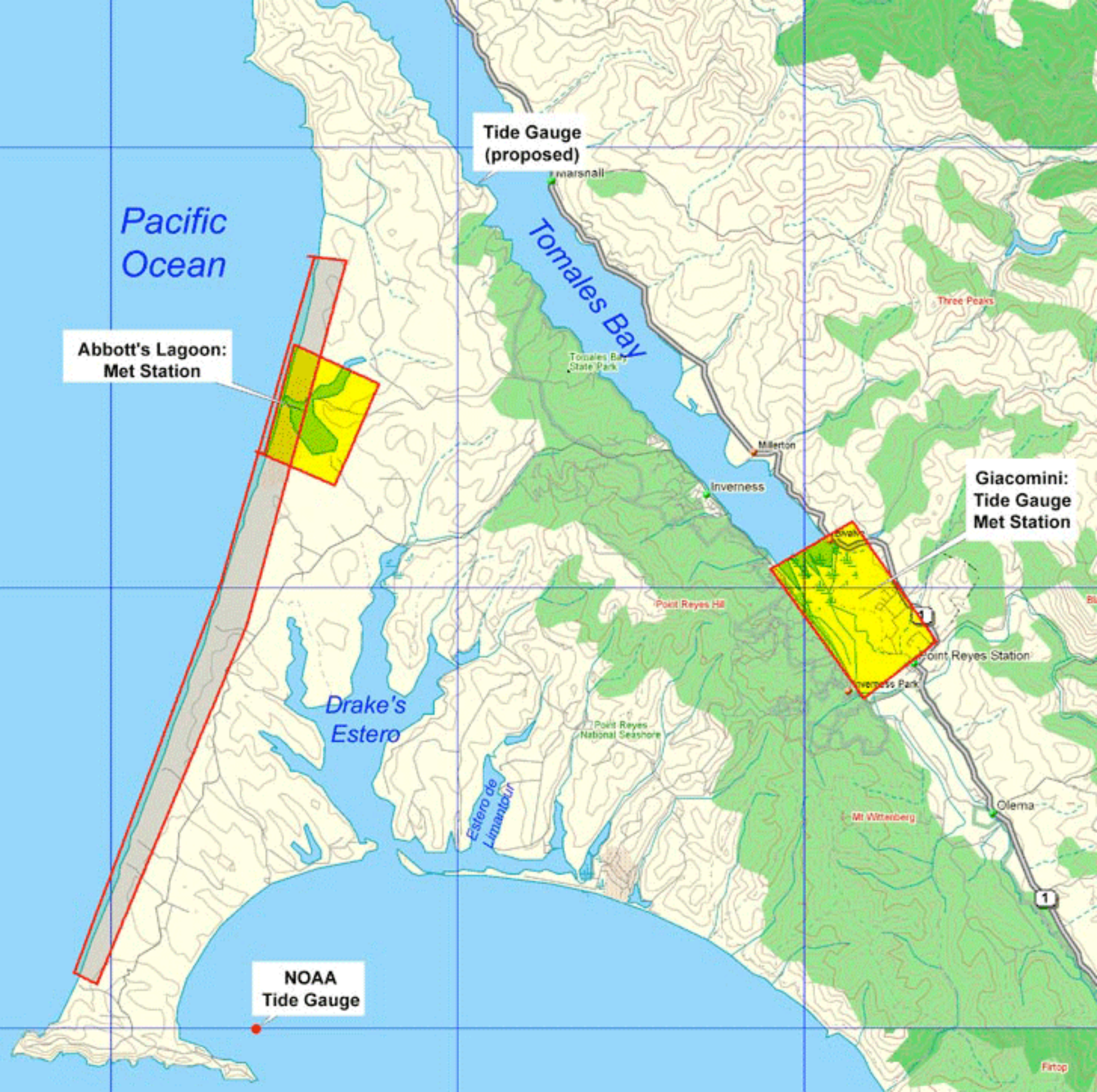
EPICENTER
January 17, 1995
magnitude 6.9
(HYPOCENTER
ten miles deep)

O s a k a B a y

NOJIMA FAULT

Awaji
Island





Pacific Ocean

Abbott's Lagoon: Met Station

Tide Gauge (proposed)

Tomales Bay

Drake's Estero

NOAA Tide Gauge

Giacomini: Tide Gauge Met Station

Estero de Limantour

Point Reyes Station

Olema

Point Reyes National Seashore

Point Reyes Hill

Three Peaks

Mt Witterberg

Firtop



