



(19) **United States**

(12) **Patent Application Publication**  
**Greene et al.**

(10) **Pub. No.: US 2007/0178857 A1**

(43) **Pub. Date: Aug. 2, 2007**

(54) **METHOD AND APPARATUS FOR HIGH EFFICIENCY RECTIFICATION FOR VARIOUS LOADS**

(75) Inventors: **Charles E. Greene**, Pittsburgh, PA (US); **Daniel W. Harrist**, Carnegie, PA (US)

Correspondence Address:  
**Ansel M. Schwartz**  
Attorney at Law  
Suite 304  
201 N. Craig Street  
Pittsburgh, PA 15213 (US)

(73) Assignee: **FireFly Power Technologies, Inc.**

(21) Appl. No.: **11/584,983**

(22) Filed: **Oct. 23, 2006**

**Related U.S. Application Data**

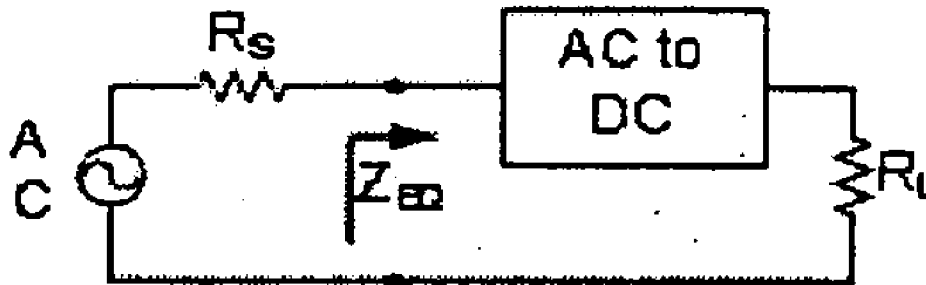
(60) Provisional application No. 60/729,792, filed on Oct. 24, 2005.

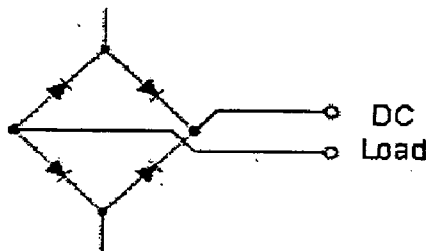
**Publication Classification**

(51) **Int. Cl.**  
*H04B 1/04* (2006.01)  
*H04B 1/38* (2006.01)  
*H01Q 11/12* (2006.01)  
*H04M 1/00* (2006.01)  
(52) **U.S. Cl.** ..... **455/127.1; 455/572**

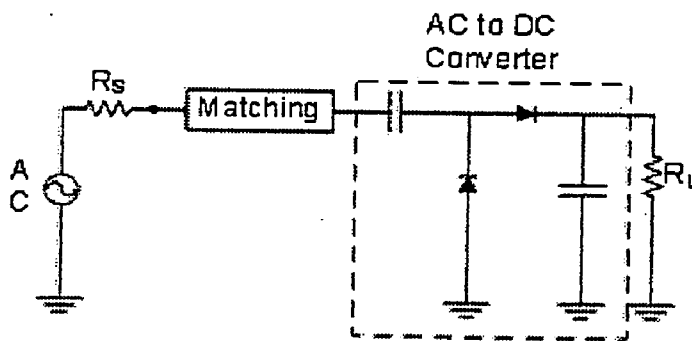
(57) **ABSTRACT**

An apparatus for converting power includes at least one impedance matching network which receives an electrical signal. The apparatus includes at least one AC to DC converter in communication with the impedance matching network. Also disclosed is a method for powering a load and an apparatus for converting power and additional embodiments of an apparatus for converting power.

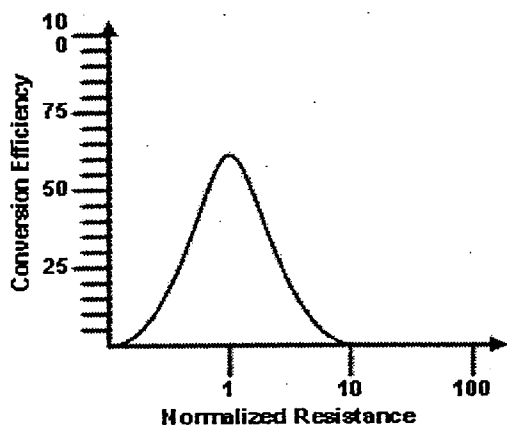




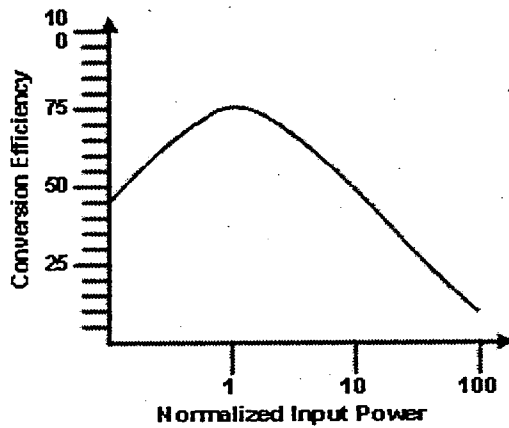
Prior Art Fig. 1



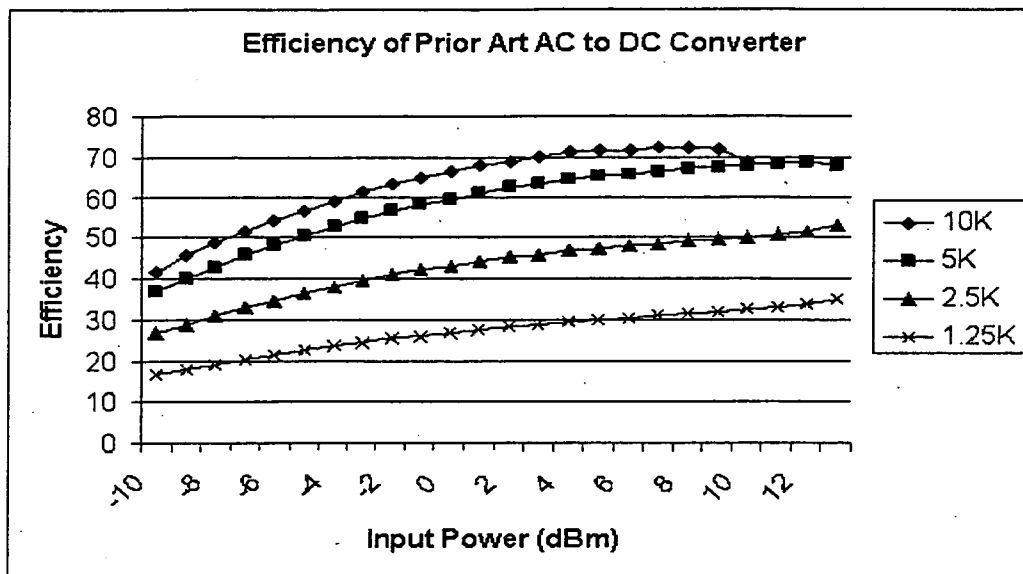
Prior Art Fig. 2



Prior Art  
Fig. 3



Prior Art  
Fig. 4



Prior Art  
Fig. 5

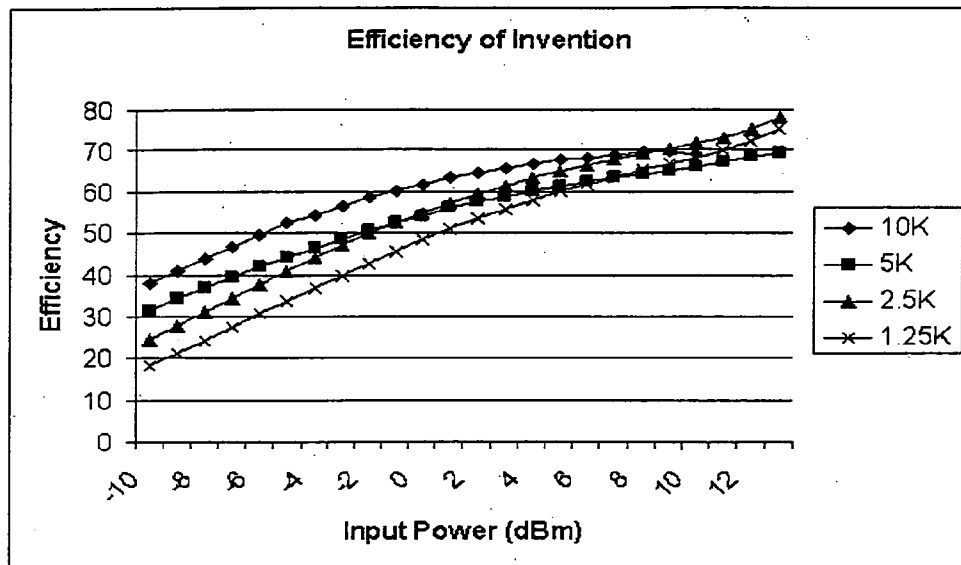


Fig. 6

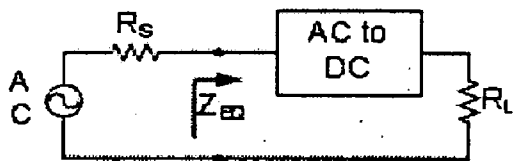


Fig. 7

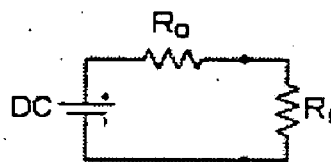


Fig. 8

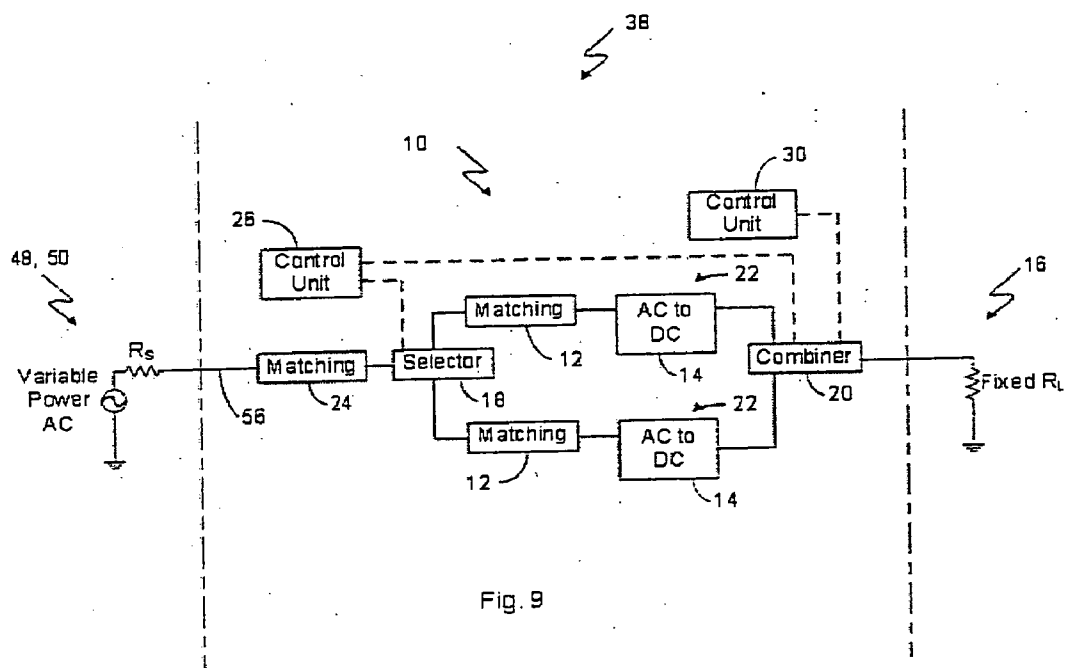


Fig. 9

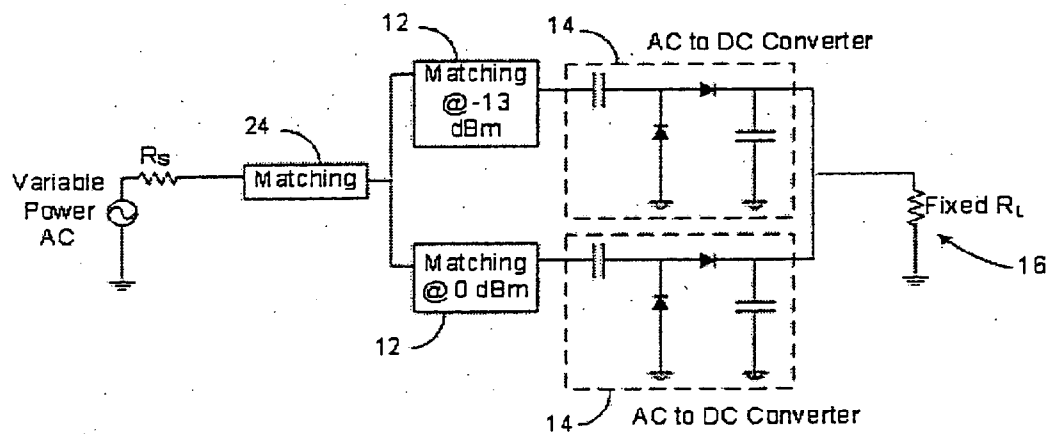


Fig. 10

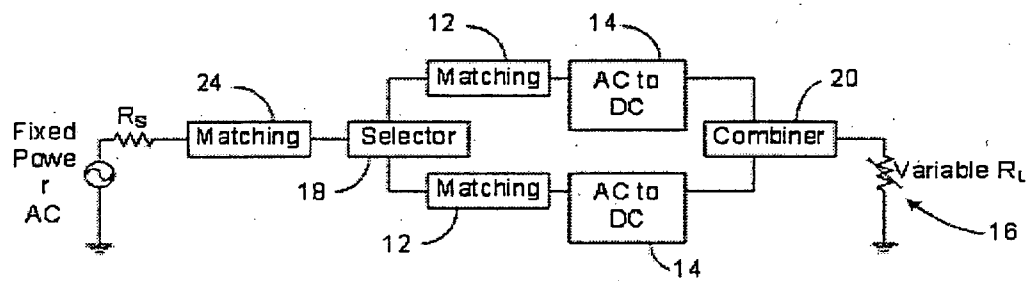


Fig. 11

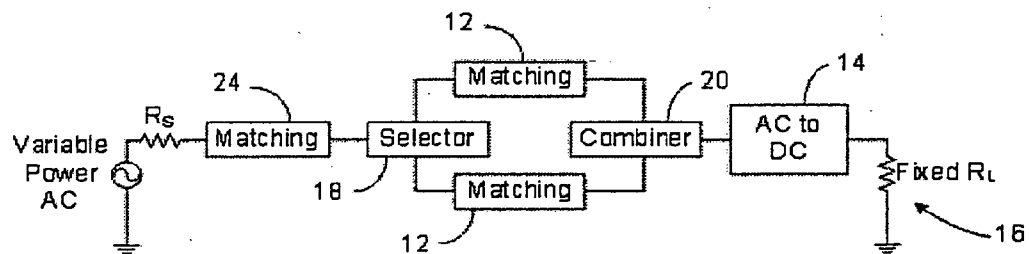


Fig. 12

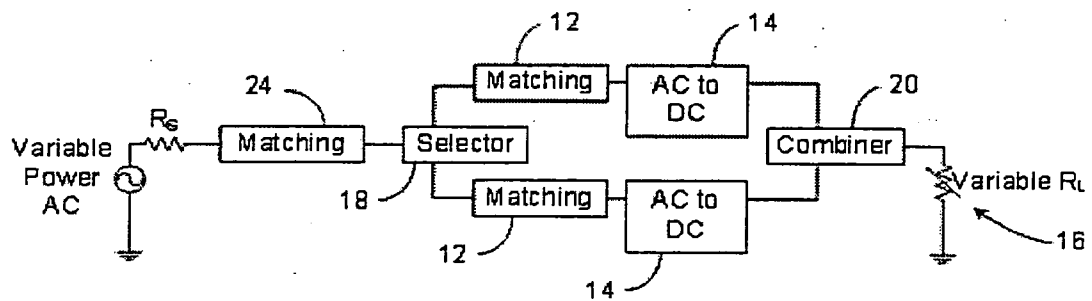


Fig. 13

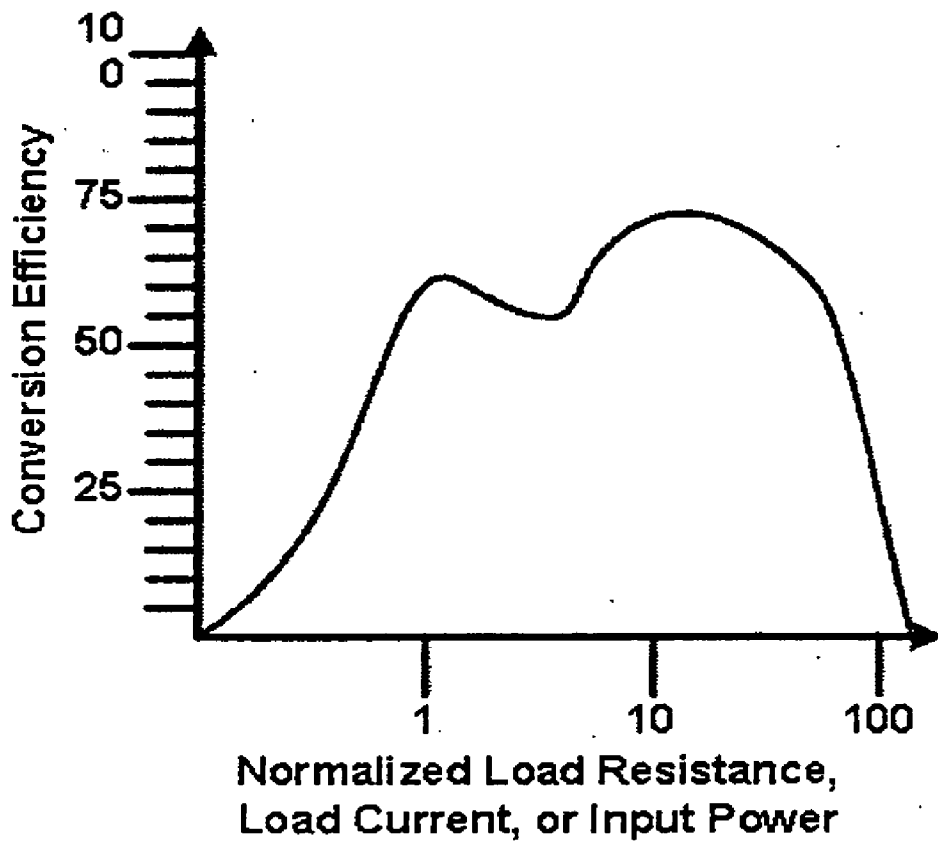


Fig. 14

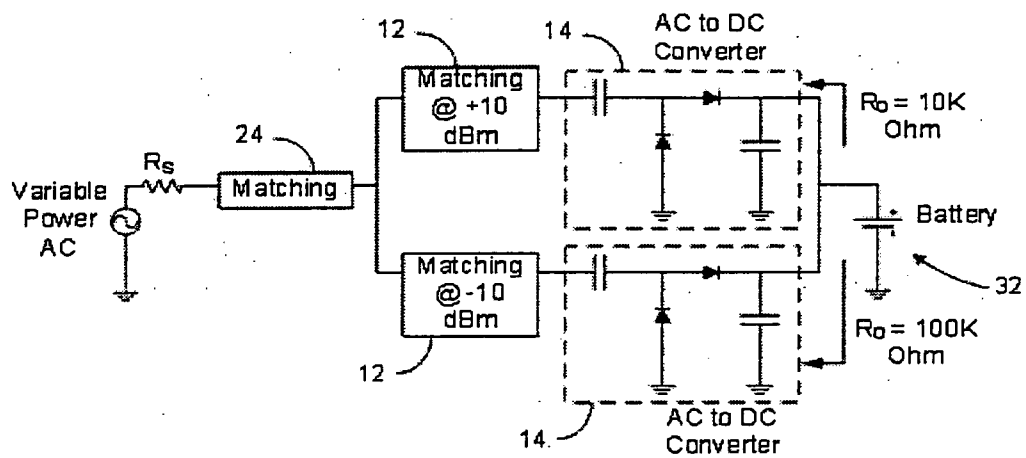


Fig. 15

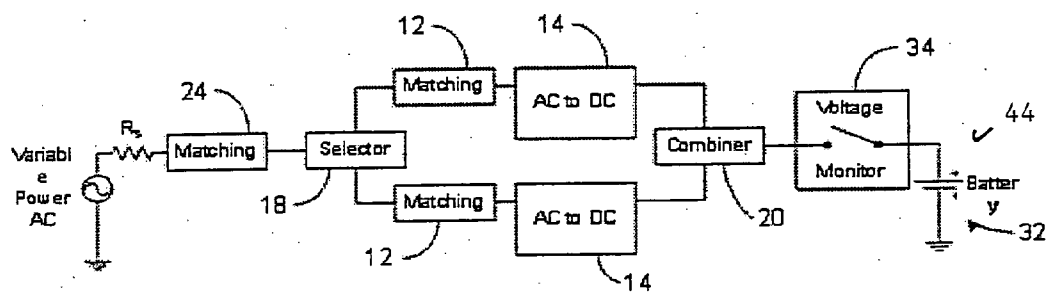


Fig. 16

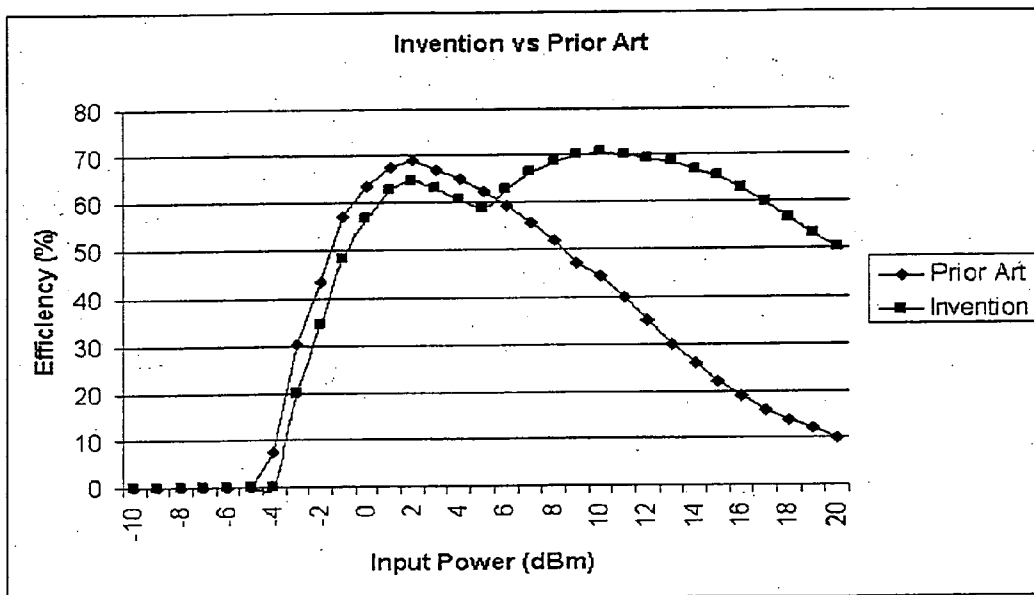


Fig. 17

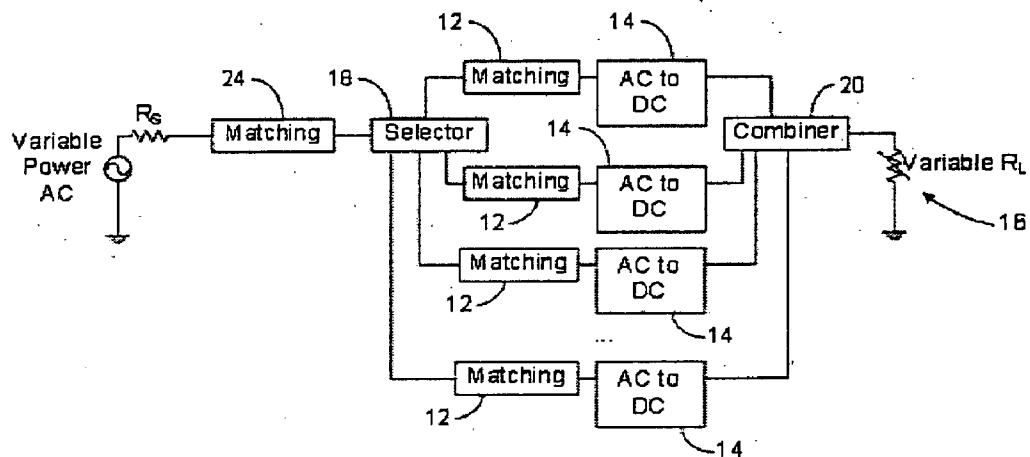


Fig. 18

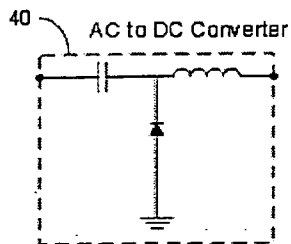


Fig. 19

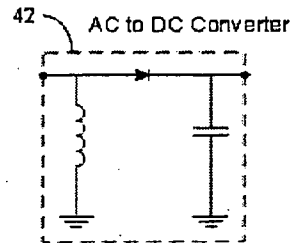


Fig. 20

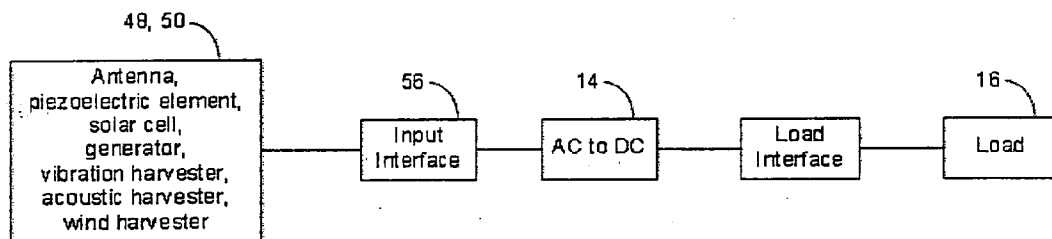


Fig. 25

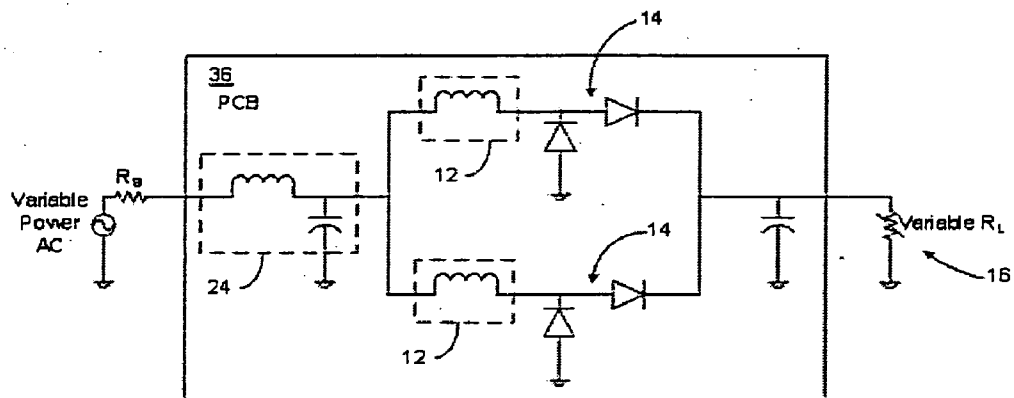
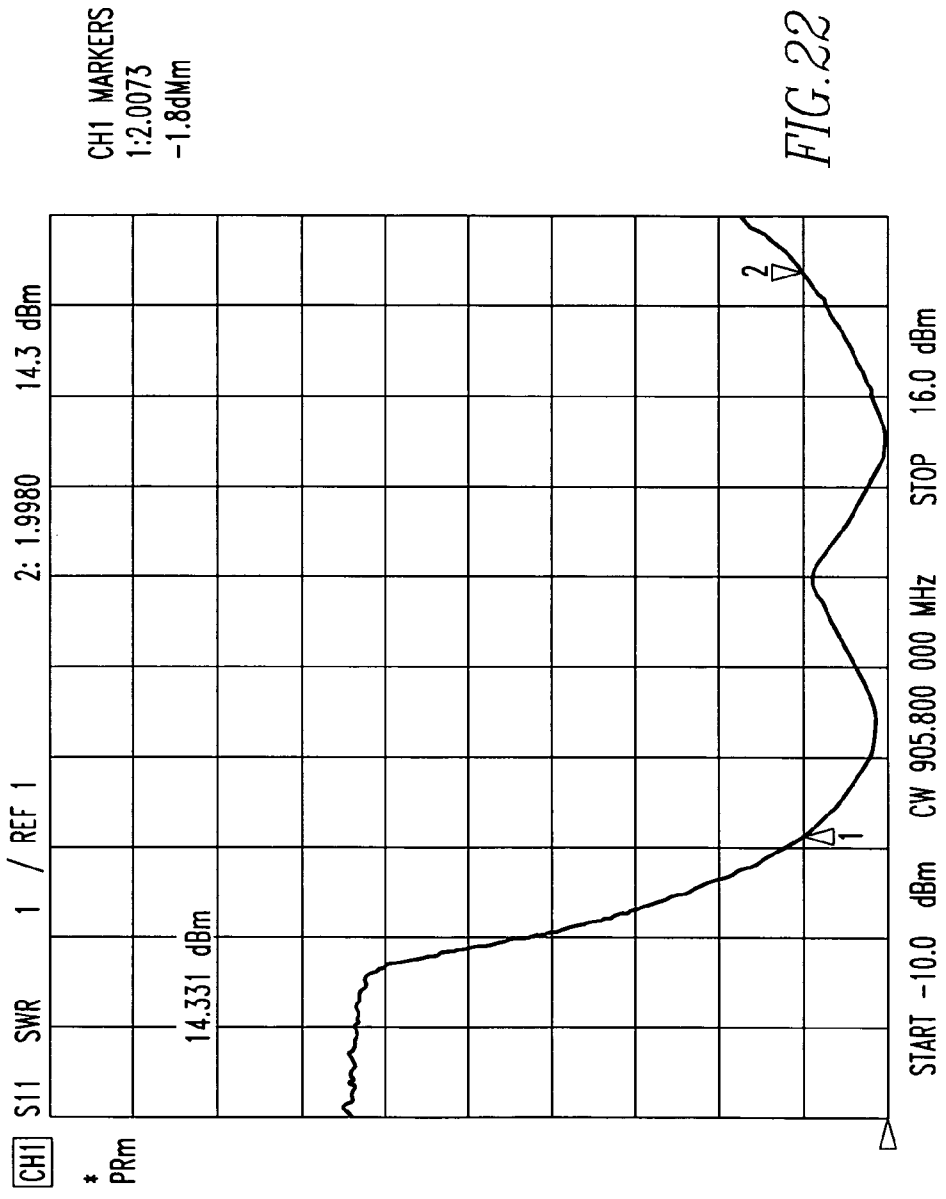


Fig. 21



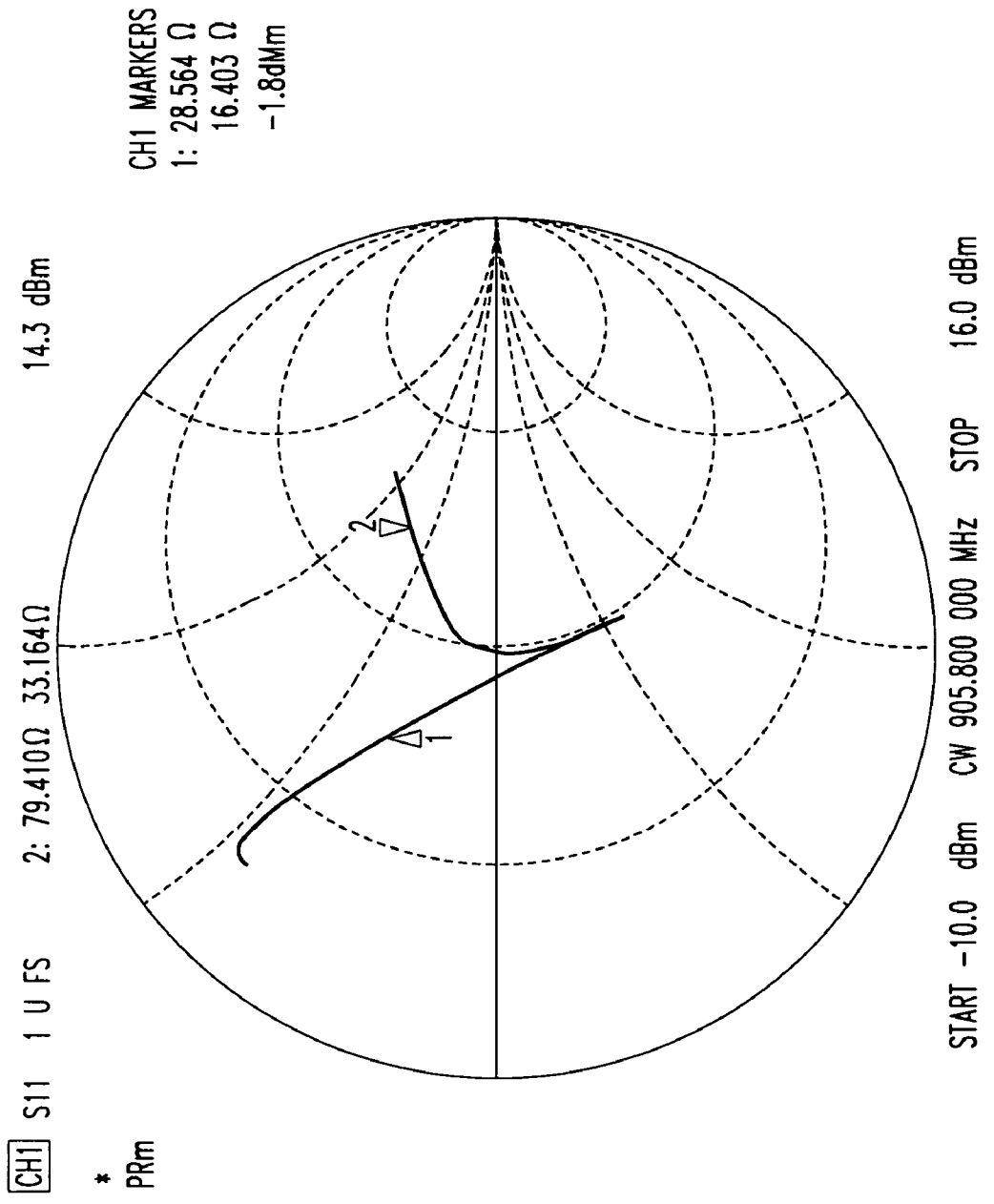


FIG. 23

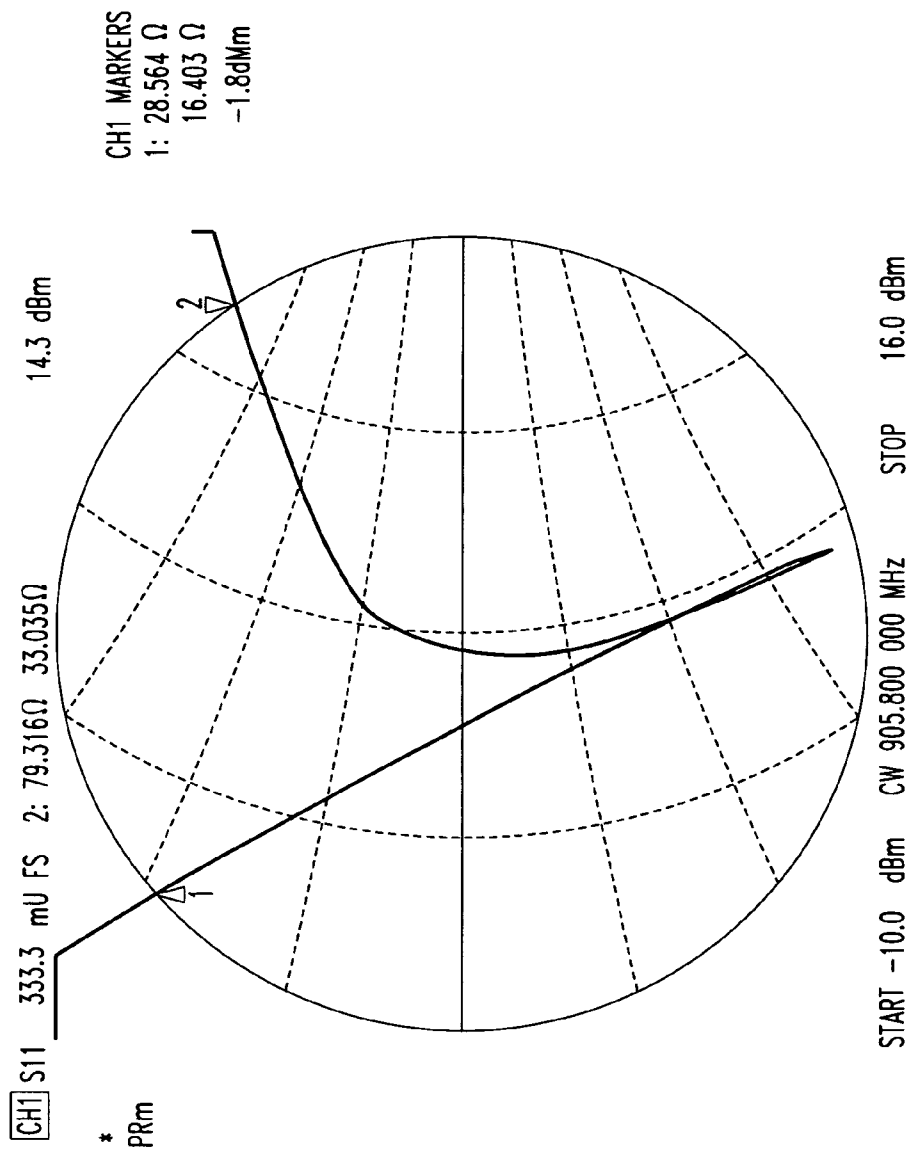


FIG.24

**METHOD AND APPARATUS FOR HIGH EFFICIENCY RECTIFICATION FOR VARIOUS LOADS**

**CROSS-REFERENCE TO RELATED APPLICATIONS**

[0001] This application claims the benefit of U.S. Provisional Patent Application Ser. No. 60/729,792, filed Oct. 24, 2005.

**BACKGROUND OF THE INVENTION**

[0002] 1. Field of the Invention

[0003] The present invention is related to a method and apparatus for converting power. More specifically, the present invention is related to a method and apparatus for converting power with an AC to DC converter.

[0004] 2. Description of Related Art

[0005] The prior art has shown that it is possible to provide power to remote devices using Radio-Frequency (RF) electromagnetic waves. Wireless power transfer has been described in great detail by W. C. Brown in U.S. Pat. No. 3,114,517, "Microwave Operated Space Vehicles," incorporated by reference herein, and within numerous other articles by the stated author. Wireless power transfer is also used to provide power to Radio-Frequency Identification (RFID) tags. The transmitted RF power is captured by an antenna and rectified using a number of disclosed circuits to provide Direct Current (DC) to a load. U.S. Pat. No. 3,434,678, "Microwave to DC Converter," incorporated by reference herein, describes an apparatus for converting microwave power to DC using the bridge rectifying circuit shown in FIG. 1.

[0006] More recent patents such as U.S. Pat. No. 6,140,924, "Rectifying Antenna Circuit," and U.S. Pat. No. 6,615,074, "Apparatus for Energizing a Remote Station and Related Method," both incorporated by reference herein, describe RF to DC converters that are implemented using voltage doubling rectifier configurations as shown in FIG. 2.

[0007] The function of these circuits is acceptable when the input power and the load impedance are constant. However, variations in either the input power or load impedance degrade the overall conversion efficiency of the circuit. The conversion efficiency is defined as the rectified output DC power divided by the Alternating Current (AC) power input to the rectifier. Examples of how changes in the load resistance (or equivalent resistance) and input power affect the conversion efficiency are shown in FIGS. 3 and 4, respectively.

[0008] Changes in the rectifier conversion efficiency for varying input power and output load were described in U.S. Pat. No. 6,212,431, "Power Transfer Circuit for Implanted Devices," incorporated by reference herein, which teaches in Column 1 lines 55-62 that when transferring power inductively from an external coil to an implanted device that "Unfortunately, neither the load associated with the implant device nor the separation distance between the external coil and the implant coil are constants. Each of these parameters are, in practice, variables, that may vary, e.g., from 3-to-15 mm for the separation distance, and 20 to 300 ohms for the load. As a result, optimum power transfer between the

external device and implant device is rarely achieved. Thus, a less than optimum power transfer condition exists . . . ." In this quotation, the separation distance is analogous to changing the input power to the implanted device. The solution proposed in U.S. Pat. No. 6,212,431 is to vary a matching parameter on the external transmitting coil to optimize the power transfer from the external transmitting coil to the implanted receiving coil. The invention disclosed in U.S. Pat. No. 6,212,431 implements the solution at the transmitter, which limits the system to one receiver because the transmitter must vary its output based on a single receiver. Also, U.S. Pat. No. 6,212,431 makes no mention of a rectifying circuit and the effect this may have on the method and apparatus presented. Additionally, U.S. Pat. No. 6,212,431 relies on inductive coupling, which allows the impedance of the implanted device to be seen by the transmitting coil in a similar manner of reflecting the impedance on the secondary side of a transformer to the primary side. The invention described herein does not rely solely on inductive or near-field power transfer, but rather includes operation in the far-field where reflecting the receiving load to the transmitting side is not possible.

[0009] Varying load impedances are also examined in U.S. Pat. No. 6,794,951, incorporated by reference herein, which describes a transmitting circuit to ionize gas to create a plasma. The problem presented is that the load seen by the transmitter changes depending on the status of the plasma in the chamber. When no plasma is present, the transmitter sees a certain impedance value. However, when there is plasma present in the chamber, a different impedance value is seen by the transmitter. To combat this issue, U.S. Pat. No. 6,794,951 proposes a dual impedance matching circuit, which is controlled via a switch selection system. During the start mode, the first impedance matching circuit is used to match when no plasma is present in the chamber. During the run mode, the second impedance matching circuit is used to match the system with plasma in the chamber. The solution presents a way to drive discrete load values on an RF transmitter. This solution is limited to the transmitting side, must know the discrete impedance values seen during the multiple modes in order to design the impedance matching networks, must have active switching to control the matching network, and is designed to give an RF output.

**BRIEF SUMMARY OF THE INVENTION**

[0010] The present invention pertains to an apparatus for converting power. The apparatus comprises at least one impedance matching network which receives an electrical signal. The apparatus comprises a plurality of AC to DC converters in communication with the impedance matching network.

[0011] The present invention pertains to a method for powering a load. The method comprises the steps of receiving an electrical signal at an impedance matching network. There is the step of converting the signal at a plurality of AC to DC converters in communication with the impedance matching network. There is the step of providing current to the load in communication with the plurality of AC to DC converters.

[0012] The present invention pertains to an apparatus for converting power. The apparatus comprises an energy harvester for harvesting a signal including at least one AC to

DC converter which provides a conversion efficiency of the signal of at least 50% for a resistive load range that covers at least 100 times the minimum value.

[0013] The present invention pertains to an apparatus for converting power. The apparatus comprises an energy harvester for harvesting a signal including at least one AC to DC converter which provides a conversion efficiency of the signal of at least 50% when charging or recharging a charge storage device for an input power range that covers at least 20 dB.

[0014] The present invention pertains to an apparatus for converting power. The apparatus comprises means for harvesting a signal including means for converting AC to DC which provides a conversion efficiency of the signal of at least 50% when charging or recharging a charge storage device for an input power range that covers at least 20 dB.

[0015] The present invention pertains to an apparatus for converting power. The apparatus comprises an energy harvester for harvesting a signal including at least one AC to DC converter which provides a conversion efficiency of the signal of at least 50% for an input power range that covers at least 20 dB.

[0016] The present invention pertains to an apparatus for converting power. The apparatus comprises at least two first impedance matching networks which receive an electrical signal. The apparatus comprises at least one AC to DC converter in communication with the first impedance matching networks. The apparatus comprises a combiner in electrical communication with the first matching networks.

[0017] The present invention pertains to an apparatus for converting power. The apparatus comprises an energy harvester including at least one AC to DC converter. The apparatus comprises at least two non-linear elements, wherein the at least two non-linear elements have different characteristics.

[0018] The present invention pertains to an apparatus for converting power. The apparatus comprises an energy harvester including at least one AC to DC converter which provides a conversion efficiency of an input signal having at least two peaks in efficiency.

[0019] The present invention pertains to an apparatus for converting power. The apparatus comprises an energy harvester including at least one AC to DC converter which provides a conversion efficiency of an input signal of at least 50% for a range from a predetermined distance to ten times the distance.

[0020] The present invention pertains to an apparatus for converting power. The apparatus comprises an energy harvester including at least one AC to DC converter configured to receive a first input power at a first distance with a first efficiency, wherein the AC to DC converter receives a second input power at a second distance with a second efficiency. The first distance is greater than the second distance, and the first efficiency is substantially similar to the second efficiency.

[0021] The present invention pertains to an apparatus for converting power. The apparatus comprises an energy harvester including at least one AC to DC converter which provides an input SWR of less than 2.0 for an input power range of at least 16 dB.

[0022] The present invention pertains to an apparatus for converting power. The apparatus comprises an energy harvester including at least one AC to DC converter which provides an input SWR of less than 2.0 for a resistive load range that covers at least 40 times a predetermined minimum value.

[0023] The present invention pertains to an apparatus for converting power. The apparatus comprises an energy harvester including at least one AC to DC converter wherein the output resistance of the AC to DC converter varies in response to changes in input power or load resistance.

[0024] The present invention pertains to an apparatus for converting power. The apparatus comprises an energy harvester including at least one AC to DC converter which provides a conversion efficiency of an input signal of at least 50% for an input power range that covers at least 20 dB.

[0025] The present invention pertains to an apparatus for converting power. The apparatus comprises an input interface and at least one AC to DC converter which provides a conversion efficiency of an input signal of at least 50% for a resistive load range that covers at least 100 times a predetermined minimum value.

[0026] The present invention pertains to an apparatus for converting power. The apparatus comprises an input interface and at least one AC to DC converter which provides a conversion efficiency of an input signal of at least 50% when charging or recharging a charge storage device for an input power range that covers at least 20 dB.

[0027] The present invention pertains to an apparatus for converting power. The apparatus comprises means for harvesting an input signal including means for converting AC to DC which provides a conversion efficiency of the input signal of at least 50% when recharging a charge storage device for an input power range that covers at least 20 dB.

[0028] The present invention pertains to an apparatus for converting power. The apparatus comprises at least two first impedance matching networks which receive an electrical signal. The apparatus comprises a combiner in electrical communication with the first matching networks. The apparatus comprises at least one AC to DC converter in communication with the first impedance matching networks through the combiner.

[0029] The present invention pertains to an apparatus for converting power. The apparatus comprises an input interface and at least one AC to DC converter. The apparatus comprises at least two non-linear elements, wherein the at least two non-linear elements have different characteristics.

[0030] The present invention pertains to an apparatus for converting power. The apparatus comprises an input interface and at least one AC to DC converter which provides a conversion efficiency of an input signal having at least two peaks in efficiency.

[0031] The present invention pertains to an apparatus for converting power. The apparatus comprises an input interface and at least one AC to DC converter which provides a conversion efficiency of an input signal of at least 50% for a range from a predetermined distance to ten times the distance.

[0032] The present invention pertains to an apparatus for converting power. The apparatus comprises an input inter-

face and at least one AC to DC converter configured to receive a first input power at a first distance with a first efficiency, wherein the AC to DC converter receives a second input power at a second distance with a second efficiency. The first distance is greater than the second distance, and the first efficiency is substantially similar to the second efficiency.

[0033] The present invention pertains to an apparatus for converting power. The apparatus comprises an input interface and at least one AC to DC converter which provides an input SWR of less than 2.0 for an input power range of over 16 dB.

[0034] The present invention pertains to an apparatus for converting power. The apparatus comprises an input interface and at least one AC to DC converter which provides an input SWR of less than 2.0 for a resistive load range that covers at least 40 times a predetermined minimum value.

[0035] The present invention pertains to an apparatus for converting power. The apparatus comprises an input interface and at least one AC to DC converter wherein the output resistance of the AC to DC converter varies in response to changes in input power or load resistance.

[0036] The present invention pertains to an apparatus for converting power. The apparatus comprising an input interface and at least one AC to DC converter which provides a conversion efficiency having at least two peaks in efficiency versus load resistance.

[0037] The present invention pertains to an apparatus for converting power. The apparatus comprising an input interface and at least one AC to DC converter which provides a conversion efficiency having at least two peaks in efficiency versus output current.

[0038] The present invention pertains to an apparatus for converting power. The apparatus comprises an energy harvester including at least one AC to DC converter which provides a conversion efficiency having at least two peaks in efficiency versus load resistance.

[0039] The present invention pertains to an apparatus for converting power. The apparatus comprises an energy harvester including at least one AC to DC converter which provides a conversion efficiency having at least two peaks in efficiency versus output current.

#### BRIEF DESCRIPTION OF THE SEVERAL VIEWS OF THE DRAWINGS

[0040] FIG. 1 is a schematic representation of a prior art bridge rectifier circuit.

[0041] FIG. 2 is a schematic representation of a prior art voltage doubling rectifier.

[0042] FIG. 3 is a graph of a prior art rectifier efficiency versus normalized load resistance where the optimal value is normalized to one.

[0043] FIG. 4 is a graph of a prior art rectifier efficiency versus normalized input power where the optimal value is normalized to one.

[0044] FIG. 5 is a graph of prior art DC to DC converter efficiency with various resistive loads.

[0045] FIG. 6 is a graph of AC to DC conversion efficiency of the present invention with various resistive loads.

[0046] FIG. 7 is a schematic representation of a simplified equivalent circuit for the input of an AC to DC converter.

[0047] FIG. 8 is a schematic representation of a simplified equivalent circuit for the output of an AC to DC converter.

[0048] FIG. 9 is a block diagram of the present invention with a fixed load and a variable input power.

[0049] FIG. 10 is a block diagram of a fixed load at the optimal value with a variable input power when using passive selector and combiner blocks.

[0050] FIG. 11 is a block diagram of the present invention with a variable load and a fixed input power.

[0051] FIG. 12 is a block diagram of one AC to DC converter with two matching networks used for active selection by the selector block.

[0052] FIG. 13 is a block diagram of the present invention with a variable load and a variable input power.

[0053] FIG. 14 is a graph of AC to DC efficiency versus normalized load resistance, load current, or input power for the present invention where lowest optimal value is normalized to one.

[0054] FIG. 15 is a block diagram of the present invention used to charge or recharge a battery at a near optimal conversion efficiency over a wide range of input power levels.

[0055] FIG. 16 is a block diagram of the present invention with voltage monitoring circuitry after the combiner.

[0056] FIG. 17 is a graph of RF to DC conversion efficiency of the present invention compared to the prior art.

[0057] FIG. 18 is a block diagram of multiple paths for conversion.

[0058] FIG. 19 is a block diagram of a single diode, full waved rectifier use with the present invention.

[0059] FIG. 20 is a block diagram of a single diode, halfwave rectifier used with the present invention.

[0060] FIG. 21 is a block diagram of an embodiment of the apparatus of the present invention that was fabricated on a printed circuit board.

[0061] FIG. 22 is a graph of measured input SWR data for the embodiment of the invention shown in FIG. 21 for different input power levels at 905.8 MHz.

[0062] FIG. 23 is a graph of measured input impedance for the embodiment of the invention shown in FIG. 21 for different input power levels at 905.8 MHz.

[0063] FIG. 24 is a graph of measured input impedance for the embodiment of the invention shown in FIG. 21 for different input power levels at 905.8 MHz wherein impedances within the Smith chart circle correspond to SWR values of less than 2.0.

[0064] FIG. 25 is another embodiment of the present invention.

DETAILED DESCRIPTION OF THE  
INVENTION

[0065] A complete understanding of the invention will be obtained from the following description when taken in connection with the accompanying drawing figures wherein like reference characters identify like parts throughout.

[0066] For purposes of the description hereinafter, the terms “upper”, “lower”, “right”, “left”, “vertical”, “horizontal”, “top”, “bottom”, and derivatives thereof shall relate to the invention as it is oriented in the drawing figures. However, it is to be understood that the invention may assume various alternative variations and step sequences, except where expressly specified to the contrary. It is also to be understood that the specific devices and processes illustrated in the attached drawings, and described in the following specification, are simply exemplary embodiments of the invention. Hence, specific dimensions and other physical characteristics related to the embodiments disclosed herein are not to be considered as limiting.

[0067] Referring now to the drawings wherein like reference numerals refer to similar or identical parts throughout the several views, and more specifically to FIG. 9 thereof, there is shown an apparatus 10 for converting power. The apparatus 10 comprises at least one first impedance matching network 12 which receives an electrical signal. The apparatus 10 comprises a plurality of AC to DC converters 14 in communication with the first impedance matching network 12 and configured to be communicable with a load 16, wherein the apparatus 10 is configured to be communicable with an input.

[0068] Preferably, there is a plurality of first impedance matching networks 12 in communication with the plurality of the AC to DC converters 14. The apparatus 10 preferably includes a selector 18 for directing the signal to the first impedance matching networks 12. Preferably, the selector 18 is active or passive.

[0069] The apparatus 10 preferably includes a combiner 20 connected to the plurality of AC to DC converters 14 for combining outputs of the AC to DC converters 14. Preferably, the combiner 20 is active or passive. The plurality of AC to DC converters 14 preferably define a plurality of AC to DC paths 22, where each path is optimized for a given characteristic. The apparatus 10 can include a second impedance matching network 24 that is configured to match an impedance of the apparatus 10 with an impedance of the input. Preferably, each AC to DC path 22 is matched to a predetermined impedance value. Each AC to DC path 22 preferably has a different output resistance. Each AC to DC converter 14 input can be matched to a predetermined impedance value at different input power levels using the at least one first impedance matching network 12.

[0070] In an embodiment when the selector 18 is active, there can be a selector control unit 26 that selects the appropriate AC to DC converter 14 based on input power level or load 16 resistance. There can be a combiner 20 connected to the plurality of AC to DC converters 14 and for combining outputs of the AC to DC converters 14, wherein the combiner 20 is active and including a combiner control unit 30. The selector 18 control unit and the combiner 20 control unit can be the same control unit.

[0071] In another embodiment, one of the AC to DC converters' 14 output resistance is designed to be at or near

one discrete resistance that the load 16 is at or near for some time; and another of the AC to DC converters' 14 output resistance is designed to be at or near a different discrete resistance that the load 16 is at or near for some other time.

[0072] Each of the AC to DC converters 14 can have a different output resistance corresponding to an associated optimal load 16. One of the AC to DC converters' 14 input impedance can be matched to a predetermined value at one power level, and another of the AC to DC converters' 14 input impedance is matched to another predetermined value at a different power level.

[0073] The load can be a battery 32 to which each AC to DC converter 14 is in electrical communication with and each AC to DC path 22 is optimized for a specific input power level and load 16 resistance, as shown in FIG. 15. There can be a voltage monitoring circuit 34 connected between the plurality of AC to DC converters 14 and the battery 32 and insures that a voltage level stays within a specified range, as shown in FIG. 16. There can be a printed circuit board 36 on which the plurality of AC to DC converters 14 and the at least one first matching network are disposed.

[0074] In yet another embodiment, the apparatus 10 is included in an energy harvester 38 that produces the electrical signal. The energy harvester 38 can include an antenna 48, a piezoelectric element 50, a solar cell, a generator, a vibration harvester, an acoustic harvester or a wind harvester, as shown in FIG. 25. At least one of the plurality of AC to DC converters 14 can be either a single diode full wave rectifier 40 or a single diode half wave rectifier 42, as shown in FIGS. 19 and 20, respectively. At least one of the plurality of AC to DC converters 14 can be a voltage doubler.

[0075] The load 16 can include at least one power storage element 44 in electrical communication with at least one of the AC to DC converters 14. The load 16 can be fixed at or near the load's 16 optimal resistance, and the electrical signal provides an input power that is variable, as shown in FIG. 10. The load 16 can be variable and the electrical signal provides an input power that is fixed, as shown in FIG. 11. Alternatively, the load 16 is variable and the electrical signal provides an input power that is variable, as shown in FIG. 13. The load 16 can be an LED.

[0076] The present invention pertains to a method for powering a load 16. The method comprises the steps of receiving an electrical signal at an impedance matching network. There is the step of converting the signal at a plurality of AC to DC converters 14 in communication with the impedance matching network. There is the step of providing current to the load 16 in communication with the plurality of AC to DC converters 14.

[0077] Preferably, the receiving step includes the step of receiving the electrical signal at a plurality of impedance matching networks in communication with the plurality of the AC to DC converters 14. There is preferably the step of directing the signal with a selector 18. Preferably, the selector 18 is active or passive.

[0078] There can be the step of combining outputs from the plurality of AC to DC converters 14 with a combiner 20 connected to the load 16. Preferably, the combiner 20 is active or passive.

[0079] The present invention pertains to an apparatus **10** for converting power. The apparatus **10** comprises an energy harvester **38** including at least one AC to DC converter **14** which provides a conversion efficiency of an input signal of at least 50% for an input power range that covers at least 20 dB.

[0080] Preferably, the AC to DC converter **14** is used in an energy harvester **38**. The energy harvester **38** can include an antenna **48**. Alternatively, the energy harvester **38** can include a piezoelectric element **50**.

[0081] The present invention pertains to an apparatus **10** for converting power. The apparatus **10** comprises an energy harvester **38** including at least one AC to DC converter **14** which provides a conversion efficiency of an input signal of at least 50% for a resistive load **16** range that covers at least 100 times a predetermined minimum value.

[0082] The present invention pertains to an apparatus **10** for converting power. The apparatus **10** comprises an energy harvester **38** including at least one AC to DC converter **14** which provides a conversion efficiency of an input signal of at least 50% when recharging a charge storage device for an input power range that covers at least 20 dB.

[0083] The present invention pertains to an apparatus **10** for converting power. The apparatus **10** comprises means for harvesting an input signal including means for converting AC to DC which provides a conversion efficiency of the input signal of at least 50% when recharging a charge storage device for an input power range that covers at least 20 dB. The means for converting AC to DC can be an AC to DC converter **14**. The means for harvesting a signal can be an energy harvester **38**.

[0084] The present invention pertains to an apparatus **10** for converting power, as shown in FIG. **12**. The apparatus **10** comprises at least two first impedance matching networks **12** which receive an electrical signal. The apparatus **10** comprises a combiner **20** in electrical communication with the first matching networks. The apparatus **10** comprises at least one AC to DC converter **14** in communication with the first impedance matching networks **12** through the combiner **20**. Preferably, the combiner **20** is a switch.

[0085] The present invention pertains to an apparatus **10** for converting power. The apparatus **10** comprises an energy harvester **38** including at least one AC to DC converter **14**. The apparatus **10** comprises at least two non-linear elements, wherein the at least two non-linear elements have different characteristics.

[0086] Preferably, the at least two non-linear elements are one or more of diodes, mosfets, or transistors. The different characteristics preferably include different impedances or different resistances.

[0087] The present invention pertains to an apparatus **10** for converting power. The apparatus **10** comprises an energy harvester **38** including at least one AC to DC converter **14** which provides a conversion efficiency of an input signal having at least two peaks in efficiency.

[0088] The present invention pertains to an apparatus **10** for converting power. The apparatus **10** comprises an energy harvester **38** including at least one AC to DC converter **14** which provides a conversion efficiency of an input signal of at least 50% for a range from a predetermined distance to ten times the distance.

[0089] The present invention pertains to an apparatus **10** for converting power. The apparatus **10** comprises an energy harvester **38** including at least one AC to DC converter **14** configured to receive a first input power at a first distance with a first efficiency, wherein the AC to DC converter **14** receives a second input power at a second distance with a second efficiency. The first distance is greater than the second distance, and the first efficiency is substantially similar to the second efficiency.

[0090] Preferably, the first input power and the second input power are formed by pulses of power.

[0091] The present invention pertains to an apparatus **10** for converting power. The apparatus **10** comprises an energy harvester **38** including at least one AC to DC converter **14** which provides an input SWR of less than 2.0 for an input power range of at least 16 dB.

[0092] The present invention pertains to an apparatus **10** for converting power. The apparatus **10** comprises an energy harvester **38** including at least one AC to DC converter **14** which provides an input SWR of less than 2.0 for a resistive load **16** range that covers at least 40 times a predetermined minimum value.

[0093] The present invention pertains to an apparatus **10** for converting power. The apparatus **10** comprises an energy harvester **38** including at least one AC to DC converter **14** wherein the output resistance of the AC to DC converter **14** varies in response to changes in input power or load **16** resistance.

[0094] The apparatus **10** preferably includes a voltage monitoring circuit **34** that insures that a voltage level stays within a specified range.

[0095] The present invention pertains to an apparatus **10** for converting power. The apparatus **10** comprises an energy harvester **38** including at least one AC to DC converter **14** which provides a conversion efficiency of an input signal of at least 50% for an input power range that covers at least 20 dB.

[0096] Preferably, the AC to DC converter **14** is used in an energy harvester **38**. The energy harvester **38** can include an antenna **48**. Alternatively, the energy harvester **38** can include a piezoelectric element **50**.

[0097] The present invention pertains to an apparatus **10** for converting power. The apparatus **10** comprises an input interface and at least one AC to DC converter **14** which provides a conversion efficiency of an input signal of at least 50% for a resistive load **16** range that covers at least 100 times a predetermined minimum value. An input interface may be a connector, wire, pin, lead, or any other suitable element that can accept the input signal.

[0098] The present invention pertains to an apparatus **10** for converting power. The apparatus **10** comprises an input interface and at least one AC to DC converter **14** which provides a conversion efficiency of an input signal of at least 50% when recharging a charge storage device for an input power range that covers at least 20 dB.

[0099] The present invention pertains to an apparatus **10** for converting power. The apparatus **10** comprises means for harvesting an input signal including means for converting AC to DC which provides a conversion efficiency of the

input signal of at least 50% when recharging a charge storage device for an input power range that covers at least 20 dB.

[0100] The present invention pertains to an apparatus **10** for converting power. The apparatus **10** comprises at least two first impedance matching networks **12** which receive an electrical signal. The apparatus **10** comprises at least one AC to DC converter **14** in communication with the first impedance matching networks **12**. The apparatus **10** comprises a combiner **20** in electrical communication with the first matching networks. Preferably, the combiner **20** is a switch.

[0101] The present invention pertains to an apparatus **10** for converting power. The apparatus **10** comprises an input interface and at least one AC to DC converter **14**. The apparatus **10** comprises at least two non-linear elements, wherein the at least two non-linear elements have different characteristics. Preferably, the at least two non-linear elements are one or more of diodes, mosfets, or transistors. The different characteristics preferably include different impedances or different resistances.

[0102] The present invention pertains to an apparatus **10** for converting power. The apparatus **10** comprises an input interface and at least one AC to DC converter **14** which provides a conversion efficiency of an input signal having at least two peaks in efficiency.

[0103] The present invention pertains to an apparatus **10** for converting power. The apparatus **10** comprises an input interface and at least one AC to DC converter **14** which provides a conversion efficiency of an input signal of at least 50% for a range from a predetermined distance to ten times the distance.

[0104] The present invention pertains to an apparatus **10** for converting power. The apparatus **10** comprises an input interface and at least one AC to DC converter **14** configured to receive a first input power at a first distance with a first efficiency, wherein the AC to DC converter **14** receives a second input power at a second distance with a second efficiency. The first distance is greater than the second distance, and the first efficiency is substantially similar to the second efficiency. Preferably, the first input power and the second input power are formed by pulses of power.

[0105] The present invention pertains to an apparatus **10** for converting power. The apparatus **10** comprises an input interface and at least one AC to DC converter **14** which provides an input SWR of less than 2.0 for an input power range of at least 16 dB.

[0106] The present invention pertains to an apparatus **10** for converting power. The apparatus **10** comprises an input interface and at least one AC to DC converter **14** which provides an input SWR of less than 2.0 for a resistive load **16** range that covers at least 40 times a predetermined minimum value.

[0107] The present invention pertains to an apparatus **10** for converting power. The apparatus **10** comprises an input interface and at least one AC to DC converter **14** wherein the output resistance of the AC to DC converter **14** varies in response to changes in input power or load **16** resistance. The apparatus **10** preferably includes a voltage monitoring circuit **34** that insures that a voltage level stays within a specified range.

[0108] The present invention pertains to an apparatus for converting power. The apparatus comprising an input interface and at least one AC to DC converter which provides a conversion efficiency having at least two peaks in efficiency versus load resistance.

[0109] The present invention pertains to an apparatus for converting power. The apparatus comprising an input interface and at least one AC to DC converter which provides a conversion efficiency having at least two peaks in efficiency versus output current.

[0110] The present invention pertains to an apparatus for converting power. The apparatus comprises an energy harvester including at least one AC to DC converter which provides a conversion efficiency having at least two peaks in efficiency versus load resistance.

[0111] The present invention pertains to an apparatus for converting power. The apparatus comprises an energy harvester including at least one AC to DC converter which provides a conversion efficiency having at least two peaks in efficiency versus output current.

[0112] The present invention discloses a method and apparatus **10** that provides a far superior solution for efficiently converting AC to DC for varying loads and input power levels than the prior art. Efficient conversion from AC to DC in this case is defined as being greater than fifty (50) percent; however, different applications may have different definitions. The invention can be applied not only to the inductive (near field) but also to the far field region. The far field region is commonly defined as  $r \geq 2D^2/\lambda$  where  $r$  is the distance between the transmitting and receiving antennas **48**,  $D$  is the maximum dimension of either the transmitting or receiving antenna **48**, and  $\lambda$  is the wavelength. The invention is implemented in the AC to DC circuitry to allow multiple devices to operate from a single power transmitter unlike the referenced prior art, which implements solutions on the transmitting side.

[0113] When examining the prior art, the circuit shown in FIG. 2 when designed properly is able to drive a fixed resistive load **16** over a limited input power range with minimal effect on the equivalent impedance of the AC to DC converter **14** and load **16**. However, when the load **16** is changed the conversion efficiency is reduced. Significant reductions are considered those that reduce the efficiency by 2 or more percent and/or reduce the AC to DC conversion efficiency below the application specific threshold such as fifty percent conversion efficiency. As an example, the circuit in FIG. 2 was constructed with a potentiometer as the load **16**. The input was matched to 50-ohms and was connected to an RF network analyzer. The AC to DC conversion efficiency was then measured for various input power levels for a potentiometer setting of 10 k-ohm, 5 k-ohm, 2.5 k-ohm, and 1.25 k-ohm. The results seen in FIG. 5 show that a change from the optimal load **16** of 10 k-ohm to 5 k-ohm reduces the AC to DC conversion efficiency at 0 dBm (dBm is decibels referenced to 1 milli-watt) from 66.25 percent to 59.58 percent, respectively. The reduction is far greater for a change from 10 k-ohm to 2.5 k-ohm, which reduces the AC to DC conversion efficiency at 0 dBm from 66.25 percent to 43.18 percent, respectively. The reduction is even more dramatic for a change from 10 k-ohm to 1.25 k-ohm, which reduces the AC to DC conversion efficiency at 0 dBm from 66.25 percent to 26.91 percent, respectively.

[0114] The invention described herein, however, does not have an AC to DC conversion efficiency that is as significantly affected by the load 16 resistance as the prior art shown in FIG. 5. To illustrate this, the invention was also measured with a potentiometer as the load 16 with settings of 10 k-ohm, 5 k-ohm, 2.5 k-ohm, and 1.25 k-ohm. The results are shown in FIG. 6, which illustrates that a change from the optimal load 16 of 10 k-ohm to 5 k-ohm reduces the AC to DC conversion efficiency at 0 dBm from 61.75 percent to only 54.19 percent, respectively. The change from 10 k-ohm to 2.5 k-ohm reduces the AC to DC conversion efficiency at 0 dBm from 61.75 percent to 54.94 percent, respectively. The change from 10 k-ohm to 1.25 k-ohm reduces the AC to DC conversion efficiency at 0 dBm from 61.75 percent to 48.42 percent, respectively. As can be seen, the invention has a slightly lower AC to DC conversion efficiency at the optimal load 16 resistance at 0 dBm, however, the AC to DC conversion efficiencies at other loads 16 remain higher than the prior art specifically at the lowest value of the load 16 resistance, 1.25 k-ohm. The invention also significantly outperforms the prior art at power levels above 0 dBm.

[0115] The reduction in conversion efficiency shown in FIG. 5 is magnified when a battery 32 or other power storage element 44 such as a large capacitor or LED is connected to the AC to DC converter 14 for the purpose of recharging or powering. The battery 32, power storage element 44, or LED holds a fairly constant voltage and therefore changes in input power result in changes in the output current, which changes the equivalent resistance seen at the output of the AC to DC converter 14. The equivalent resistance is defined as the output voltage divided by the output current. As an example, if one milliwatt (1 mW) is input to an AC to DC converter 14 connected to a 3-volt battery 32 and the AC to DC conversion efficiency is 50 percent, the equivalent load 16 seen by the AC to DC converter 14 is given by

$$R_{EQ} = \frac{V_B}{I_B} = \frac{V_B^2}{eP_{IN}} = \frac{V_B^2}{P_{OUT}}$$

where  $V_B$  is the battery 32 voltage,  $I_B$  is the current through the battery 32,  $e$  is the AC to DC conversion efficiency,  $P_{IN}$  is the input power to the AC to DC converter 14, and  $P_{OUT}$  is the output power from the AC to DC converter 14. For this example, the equivalent resistance is 18 k-ohm. However, if the input power is changed to two milliwatts (2 mW) and the conversion efficiency remains 50 percent the equivalent resistance is reduced to 9 k-ohm. Using this example, it can be seen that the equivalent load 16 resistance is inversely proportional to the input power to the AC to DC converter 14.

[0116] The changes in conversion efficiency for AC to DC converters 14 can be broken into two categories. First, power can be lost (reflected) when the equivalent impedance of the AC to DC converter 14 and load 16,  $Z_{EQ}$ , is not the complex conjugate of the source impedance. An example is shown in FIG. 7. This loss can be seen by examining the Maximum Power Transfer Theorem, which is well known to those skilled in the art. The Maximum Power Transfer Theorem states that the maximum power is transferred from the source to the load 16 when the source and load 16 impedance are complex conjugates.

[0117] The second form of efficiency loss is caused by mismatch between the DC output resistance of the AC to DC converter 14 and the load 16 resistance. For the purpose of this invention, impedance mismatch is considered significant if more than ten percent of the power is reflected or lost. For the AC to DC converter 14, the output is DC and therefore the resistances must be equal. A simplified equivalent circuit for the output of an AC to DC converter 14 can be seen in FIG. 8 where  $R_O$  is the DC output resistance of the AC to DC converter 14 and  $R_L$  is the load 16 resistance. From FIG. 8 and the Maximum Power Transfer Theorem, the maximum power will be delivered from the AC to DC converter 14 to the load 16 when  $R_O=R_L$ . This condition will therefore be termed the optimal load 16 resistance. It should be noted that the two efficiency losses are linked together. As an example, varying the load 16 resistor not only causes loss due to DC output mismatch, but the change in load 16 resistance also changes the equivalent impedance seen by the source, which causes input mismatch.

[0118] The present invention addresses the two efficiency losses previously stated by creating multiple AC to DC paths 22 by use of multiple AC to DC converters 14. The multiple paths allow each path to be optimized for a given characteristic to provide a near optimal performance over a wider range of input parameters.

[0119] The present invention can be implemented for a number of different combinations. In a first embodiment, the load 16 is fixed at or near the optimal load 16 resistance, which was described above, and the input power is variable. As stated previously, with proper design the AC to DC converter 14 in FIG. 2 can efficiently drive a fixed load 16 over a limited input power range. This can be seen in FIG. 5. However, if it is desired to efficiently drive the load 16 over a larger input power range than can be provided by the prior art or if it is found to be advantageous in other applications where the load 16 is fixed, the invention can be used. A block diagram of an embodiment of the invention can be seen in FIG. 9, where the AC to DC converter includes a selector, two first impedance matching networks 12, two AC to DC converters 14, and a combiner 20 in communication with an input and a load 16.

[0120] As shown in FIG. 9, the input is an AC source with a source impedance,  $R_S$ , which are initially matched to the equivalent circuit of the selector 18, the AC to DC converters 14 and their associated first impedance matching networks 12, the combiner 20, and the load 16 using the second impedance matching network 24. The first and second impedance matching networks 12, 24 can be, but are not limited to, Pi-, T-, L-, single series element, or single shunt element network that can contain combinations of inductors and capacitors well known to those skilled in the art and described in detail in the books, "Antenna Impedance Matching" by the author Wilfred N. Caron and "The Design of Impedance-Matching Networks for Radio-Frequency and Microwave Amplifiers" by the author Pieter L. D. Abrie, both incorporated by reference herein. It should be noted that the capacitors and inductors used in the first and second impedance matching networks 12, 24 may be discrete elements, elements formed on a substrate such as a Printed circuit board 36 (PCB) or chip, intrinsic elements, or parasitic elements. The output from the second impedance matching network 24 is connected to the selector 18, which directs the signal to the appropriate AC to DC path 22. The

selector **18** can be, but is not limited to, a simple hardwired connection, such as a microstrip line, a balanced-unbalanced (balun) transformer, or an active switching circuit such as a transistor, pin diode(s), or relay. Each AC to DC path **22** is matched to a predetermined impedance value, such as 50 ohms for standard antenna types, at different power levels using their respective first impedance matching networks **12** and impedance matching techniques known to those skilled in the art. The output from each AC to DC converter **14** is then combined using the combiner **20**, and the combined DC is sent to the load **16**. The combiner **20** can be, but is not limited to, a simple hardwired connection such as a microstrip line, discrete components such as diodes, or an active switching circuit such as a transistor, pin diode(s), or relay. The second impedance matching network **24** next to the input may be needed if the two paths interfere with each other, which may be the case if using a passive selector **18** and/or combiner **20** that can be implemented with a directly wired connection. The AC to DC converters **14** that can be used with the invention can be, but are not limited to, a voltage doubler (one or more stages), charge pump, peak detector (series or shunt), bridge rectifier, or other AC rectifying circuits.

[0121] It has been determined through experimentation that the circuit shown in FIG. 2 can efficiently drive the fixed optimal load **16** resistance over a range of  $-7$  to  $+0$  dBm (17 dB range, see FIG. 5) when matched at 0 dBm and designed properly. However, if a range of  $-20$  to  $+0$  dBm is required, the circuit in FIG. 2 will suffer from the effects shown in FIG. 4, and the conversion efficiency will be reduced below 50 percent at the lower power level (less than  $-7$  dBm). The reduction in the conversion efficiency for this case is caused by power reflected at the input to the AC to DC converter **14** in FIG. 2 due to an impedance mismatch. The impedance mismatch is caused by the change in the input power. The AC to DC converter **14** contains nonlinear elements. The nonlinear nature of the elements means their impedance values change with the power level, which will in turn cause an impedance mismatch between the source and the AC to DC converter **14**.

[0122] A solution to this problem is to use the AC to DC converter **14** in FIG. 9 where the top AC to DC converter **14** is matched at  $-13$  dBm and the bottom AC to DC converter **14** is matched at  $+0$  dBm. The selector **18** can then choose the appropriate path for the input signal depending on the input power level. The top AC to DC converter **14** will be able to drive the fixed optimal load **16** resistance over a 17 dB range as previously stated, meaning it can convert the input AC signal efficiently over the  $-20$  dBm to  $-3$  dBm range. The bottom AC to DC converter **14** can also efficiently convert the input AC signal over a 17 dB range, which means it can convert input signals with power levels from  $-7$  dBm to  $+10$  dBm. The combination of the two AC to DC converters **14** allows the entire AC to DC converting system to accept input power levels from  $-20$  dBm to  $+10$  dBm or a 30 dB power range which is 20 times the range of a single AC to DC converter **14**.

[0123] It should be noted that the selector **18** may be either active or passive. In the active case, a control unit is used to select the appropriate path for the incoming signal based on the power level or load **16** resistance. If the selector **18** is a passive unit, it can be implemented by, but not limited to, a simple wired connection. In this case, the signal would be

supplied to the inputs of both AC to DC converter's **14** first impedance matching networks **12**. The signal would split itself with most power choosing the path with the least mismatch at the power level of the input signal.

[0124] The combiner **20** may take many different forms depending on the configuration of the rest of the system. As an example, the combiner **20**, if active, may be implemented with a switch similar to the one used in the selector **18**, if active, and both could be controlled by the same controller or a different controller. In the active case, a control unit is used to select the appropriate path for the incoming signal based on the power level or load **16** resistance. When a passive system is advantageous, the combiner **20** can be implemented with a simple wired connection as long as the output of the unused AC to DC path **22** will not affect the performance or with one or more blocking diodes. An example converter for the passive case for both the selector **18** and combiner **20** is shown in FIG. 10 where the matching has been configured to match the previous example.

[0125] A second embodiment for how the invention can be implemented is to have a fixed input power and a variable load **16** resistance, which is shown in FIG. 11.

[0126] In the prior art circuit in FIG. 2, there will be loss described by the Maximum Power Transfer Theorem due to the mismatch of the AC to DC converter **14** output resistance and the load **16** resistance. The corresponding conversion efficiency will be similar to that shown in FIG. 3. The AC to DC converter **14** in FIG. 2 can be matched to loads **16** other than the optimal load **16** resistance to minimize the loss in conversion efficiency caused by input mismatch at that load **16** resistance value. However, there will still be loss in conversion efficiency due to the mismatch between the AC to DC converter **14** output DC resistance and the load **16** resistance and the conversion efficiency will take a shape similar to that shown in FIG. 3. There will also be loss due to impedance mismatch between the impedance of the input and the input of the AC to DC converter **14** caused by the change in the load **16** resistance.

[0127] The invention can be used to combat the issue of reduced conversion efficiency by matching the top AC to DC converter **14** in FIG. 11 at or near one discrete resistance that the variable load **16** is at or near for some time. The bottom AC to DC converter **14** in FIG. 11 is matched to a different discrete resistance that the variable load **16** is at or near for some time. This technique will reduce the loss caused by impedance mismatch between the impedance of the input and the input of the AC to DC converter **14** caused by the change in the load **16** resistance as was shown in FIG. 5. However, the loss caused by the mismatch between the AC to DC converter **14** output DC resistance and the load **16** resistance is still present in this case.

[0128] In the two previous embodiments, fixed input power/variable load **16** resistance and fixed load **16** resistance/variable input power, an observation can be made; multiple AC to DC converter **14** paths may not be needed if the combiner **20** is put before the AC to DC converter **14** as shown in FIG. 12. This would essentially be switching between the two first impedance matching networks **12** to work with the same AC to DC converter **14**. This realization is valid when the selection by the selector **18** and combiner **20** is done with an active element such as a transistor, pin diode, or relay, which would be controlled by a controller. If

passive selection is used by a simple wired connection, the realization of using a single AC to DC converter **14** is no longer valid due to the fact that the parallel matching networks will reduce to a single matching network yielding the same problems present in the prior art.

[0129] For the passive selection case, an AC to DC converter **14** on each path insures that the AC signal is not present at the output. The lack of AC at the output means the two path outputs will not destructively interfere. The lack of AC at the output is sometimes referred to as destroying the phase. It should be noted that for the active selection case, it may be found advantageous to still include both AC to DC converters **14**. However, the AC to DC converters **14** can be reduced to a single AC to DC converter **14** for most applications.

[0130] A third and more practical embodiment of how the invention can be implemented is for a variable input power and a variable load **16** resistance, which is shown in FIG. **13**.

[0131] A realistic situation in AC to DC converting applications, such as RF to DC conversion, is to have a variable input power and a variable load **16** resistance. This situation combines the problems associated with the previous two embodiments (fixed input power/variable load **16** resistance and fixed load **16** resistance/variable input power). These problems are losses caused by input and output impedance mismatch of the AC to DC converter **14**. The solution for the input impedance mismatch was presented in the first embodiment, which matched each path at a different power level for the optimal load **16** resistance. The problem with this embodiment is that it was limited to the optimal load **16** resistance. The remaining problem in the first embodiment was the loss caused for non-optimal loads **16** by the resistive mismatch between the output resistance of the AC to DC converter **14** and the resistive load **16**. This problem was addressed in the second embodiment by matching each path to a different resistance. The issue with the second embodiment was that it was for a fixed power and power level changes would cause mismatch at the input to the AC to DC converter **14** thus causing the conversion efficiency to be reduced.

[0132] A solution to the output mismatch loss and the input mismatch loss is to adjust the parameters of the AC to DC converters **14** so they have different output resistance thus enabling the converter to have more than one optimal load **16**. In other words, the output resistance varies with input power and/or load **16** resistance. The parameters may be adjusted by using different diodes, transistors, or other non-linear elements or by using different AC to DC topologies. Preferably, different diodes are used wherein at least one diode has a different resistance, impedance, turn-on voltage, junction capacitance, or other characteristic. This technique can then be implemented in conjunction with the method described in the first embodiment, which matched each path at a different power level. The result provides an AC to DC conversion efficiency graph with two peaks unlike the single peak shown in FIG. **3**. The resulting graph has a nearly constant conversion efficiency over a wider range of load **16** resistances as shown in FIG. **14**.

[0133] The technique of multiple AC to DC paths **22** matched at different input power levels with different output resistances works exceptionally well when connecting the converter to a battery **32** for recharging purposes or to an

LED for direct powering. The battery **32** or LED equivalent resistance is inversely proportional to the input power to the AC to DC converter **14**, which means at low power levels the battery **32** or LED looks like a large resistor while at high power levels the battery **32** or LED looks like a small resistor. This realization allows each path to be optimized for a specific power level and load **16** resistance. As an example, the upper AC to DC path **22** in FIG. **13** could be impedance matched at a high power level and the AC to DC converter **14** in that path could be designed to have a low optimal load **16** resistance. The lower path, on the other hand, could be impedance matched at a low power level and the AC to DC converter **14** in that path could be designed to have a high optimal load **16** resistance. The resulting converter using passive selector **18** and combiner **20** (directly wired) can be seen in FIG. **15**.

[0134] It should be noted that for battery **32** (or for other storage) charging and applications where circuits or resistive loads are driven directly, it may be necessary to place a voltage monitoring circuit **34** on the output of the combiner **20** to ensure that the voltage level stays within a specified range. The voltage monitoring circuit **34** can include, but is not limited to, over-voltage protection, under-voltage protection, or some combination of the two; regulator; DC to DC converter; or any other circuit that can ensure that the voltage level stays within a specified range. This can be seen in FIG. **16**.

[0135] The concepts described herein have been verified in an RF power harvesting application. The converter shown in FIG. **21** was fabricated on a Printed circuit board **36** (PCB), although it is possible to form the converter on a semiconductor or equivalent chip. In the fabricated converter, the AC source and source resistance in the Figure have been implemented with an energy harvesting antenna **48** and the matching and output resistances were designed to drive a 3-volt battery **32**. The results of tests showed that the design had a conversion efficiency of over 50 percent over a range from  $-1$  dBm to  $+20$  dBm, which can be seen in FIG. **17** and is compared to the prior art, while maintaining a Standing Wave Ratio (SWR) of under 2.0 over almost the entire range for a frequency of 905.8 Mega-Hertz (MHz) and a 3-volt battery **32**. The SWR is a measurement that describes how well the equivalent circuit of the AC to DC converter **14** and load **16** resistance is matched to the impedance of the input, which in this case was a 50-ohm antenna **48**. FIGS. **22-24** show the SWR data measured using a network analyzer. As is shown in the Figs., the AC to DC converter had an SWR of less than 2.0 for an input power of  $-1.82$  dBm to  $14.3$  dBm or a range of over 16 dB. The same is true for a load **16** range of over 16 dB (range covering 40 times a minimum value), that is, the SWR is less than 2.0. An SWR value of 2.0 is approximately a reflection loss of 10 percent.

[0136] It is important to note that in RF power harvesting applications, the power range of the converter,  $-1$  dBm to  $+20$  dBm for this example, can be translated into distance from a powering transmitter. It is well known to those skilled in the art that the power available at a receiving antenna **48** in the far-field is inversely proportional to the square of the distance between the transmitter and receiver. Given this fact and the  $-1$  dBm to  $+20$  dBm power range (where the difference from the lowest power to the highest power is approximately 20 dB or 100 times the lowest power), the

distance in which the conversion efficiency is over 50% for this example will be from a distance X to a distance proportional to the square root of the power range, or for this case the square root of 100. Using this example it can be seen that the fabricated converter can convert greater than 50% of the available power from a distance X to a greater distance of 10X where X is determined by the power setting, gain, and algorithm of the powering transmitter. In other words, the conversion efficiency of the invention does not substantially change for changes in distance. It should be noted that the AC to DC conversion efficiency of the invention at a given time is based on the instantaneous power level (power level at that given time) and, therefore, using a transmitter algorithm such as a pulsing algorithm, as disclosed in U.S. Provisional application 60/656,165, and related U.S. patent application Ser. No. 11/356,892, incorporated by reference herein, the invention is able to efficiently convert AC to DC at much lower average input power levels than those depicted in FIG. 17. As an example, if a 0 dBm continuous wave (CW) AC input is supplied to the invention, from FIG. 17, the conversion efficiency will be approximately 57 percent because the peak instantaneous power is 0 dBm. However, if 0 dBm is pulsed at a 25 percent duty cycle, the average power is a fourth of 0 dBm or -6 dBm. According to FIG. 17, the conversion efficiency at -6 dBm is zero percent. However, the use of pulsing means the input power has a peak instantaneous power of 0 dBm during the pulse and therefore the AC to DC conversion efficiency is still approximately 57 percent. As this example shows, the use of pulsing allows the AC to DC conversion efficiency graph in FIG. 17 to be shifted to the lower power levels by adjusting the peak power levels of the pulses to fall within the high efficiency conversion region which for FIG. 17 is -1 to 20 dBm. The average power, however, may be outside the high efficiency conversion region. In RF power harvesting applications, using the pulsing method with the invention allows the AC to DC converter 14 to efficiently convert the RF energy captured by the antenna 48 for the same average power as a CW signal at a much greater distance from the transmitter.

[0137] Since light is a form of AC, the technique described herein can also be applied to solar panels and other light to DC converting circuits. The concepts described are still applicable; however, the blocks may not be represented by electrical circuits but rather optical devices such as, but limited to, lens, optical filters, optical fiber, etc. An example for how a solar panel could use the concepts described in the invention can be developed by realization that a solar cell suffers from the same conversion efficiency as described by FIG. 3. There is an optimal value of the solar cell load 16 resistor that produces the maximum output power. The technique described herein could be applied by creating adjacent solar cells with different output resistance to enable the solar panel to have more than one optimal resistive load 16 which allows the solar panel to have a near optimal conversion efficiency across a wider range of load 16 resistances.

[0138] As shown with the solar cell example, the invention can be applied to any number of fields such as, but not limited to, rectifying circuits for converting AC to DC in RF power harvesting, piezoelectric power harvesting, solar cells, generators, vibration harvesting, acoustic harvesting, or any other application requiring conversion of AC to DC. As the previous list of applications shows, the invention has

numerous implementations in the energy harvesting or power harvesting field. Energy harvesting is defined as capturing energy from the surroundings and converting the captured energy into another form of energy. Captured energy may be specifically created for the purpose of harvesting or be ambient, meaning the energy is from the environment or created for another purpose such as, but not limited to, sunlight and radio communications, respectively. The apparatus 10 that harvests the energy is termed the energy harvester 38 and may include, but is not limited to, an antenna 48, a piezoelectric element 50, a solar cell, a generator, a vibration harvester, an acoustic harvester, a wind harvester, any other element or elements that harvest energy, an AC to DC converter 14, a voltage doubler (one or more stages), charge pump, peak detector (series or shunt), bridge rectifier, other AC rectifying circuits, or the invention.

[0139] It should be noted that the embodiments outlined above could be applied to other storage devices such as, but not limited to, a capacitor. The converter could also be designed to directly drive any circuit that runs in more than one mode of operation, such as, but not limited to, a microcontroller that runs in sleep mode and active mode. The equivalent resistance of the microcontroller would be high in sleep mode and low in active mode, giving the need for efficient conversion of AC to DC over more than one resistive load 16.

[0140] There may be a need for the converter to have an even wider range of input power levels and/or load 16 resistances. For this circumstance, more than two AC to DC paths 22 could be implemented using the same procedure described in detail herein. An example of this is shown in FIG. 18, where a plurality of AC to DC paths 22 is illustrated.

[0141] The invention is designed to be independent of the type of AC to DC converters 14 that can be used. Several AC to DC converters 14 were tested and are known to work with the invention. FIG. 2 shows a voltage doubler from the prior art, which has been tested with the invention. FIG. 19 shows a single diode, full wave rectifier 40 that has been tested and is known to work with the invention. It should be noted that different AC to DC converter 14 topologies, as shown in FIGS. 2, 19, and 20, may be used within the invention to produce a desired effect.

[0142] FIG. 20 shows a single diode, half wave rectifier 42 that has been tested and is known to work with the invention. The invention will work with any other AC rectifying circuits.

[0143] FIG. 22 is a graph of measured input SWR data for the embodiment of the invention shown in FIG. 21 for different input power levels at 905.8 MHz.

[0144] FIG. 23 is a graph of measured input impedance for the embodiment of the invention shown in FIG. 21 for different input power levels at 905.8 MHz.

[0145] FIG. 24 is a graph of measured input impedance for the embodiment of the invention shown in FIG. 21 for different input power levels at 905.8 MHz wherein impedances within the Smith chart circle correspond to SWR values of less than 2.0.

[0146] It will be understood by those skilled in the art that while the foregoing description sets forth in detail preferred

embodiments of the present invention, modifications, additions, and changes might be made thereto without departing from the spirit and scope of the invention.

The invention claimed is:

1. An apparatus for converting power comprising:
  - at least one first impedance matching network which receives an electrical signal; and
  - a plurality of AC to DC converters in communication with the first impedance matching network and configured to be communicable with a load,
 wherein the apparatus is configured to be communicable with an input.
2. An apparatus as described in claim 1 wherein there are a plurality of first impedance matching networks in communication with the plurality of the AC to DC converters.
3. An apparatus as described in claim 2 including a selector for directing the signal to the first impedance matching networks.
4. An apparatus as described in claim 3 wherein the selector is active or passive.
5. An apparatus as described in claim 1 including a combiner connected to the plurality of AC to DC converters for combining outputs of the AC to DC converters.
6. An apparatus as described in claim 5 wherein the combiner is active or passive.
7. An apparatus as described in claim 1 wherein the plurality of AC to DC converters define a plurality of AC to DC paths, where each path is optimized for a given characteristic.
8. An apparatus as described in claim 1 including a second impedance matching network that is configured to match an impedance of the apparatus with an impedance of the input.
9. An apparatus as described in claim 7 wherein each AC to DC path is matched to a predetermined impedance value.
10. An apparatus as described in claim 7 wherein each AC to DC path has a different output resistance.
11. An apparatus as described in claim 7 wherein each AC to DC input is matched to a predetermined impedance value at different input power levels using the at least one first impedance matching network.
12. An apparatus as described in claim 3 wherein the selector is active and including a selector control unit that selects the appropriate AC to DC converter based on input power level or load resistance.
13. An apparatus as described in claim 12 including a combiner connected to the plurality of AC to DC converters and for combining outputs of the AC to DC converters, wherein the combiner is active and including a combiner control unit.
14. An apparatus as described in claim 13 wherein the selector control unit and the combiner control unit are a same control unit.
15. An apparatus as described in claim 1 wherein one of the AC to DC converters' output resistance is designed to be at or near one discrete resistance that the load is at or near for some time; and another of the AC to DC converters' output resistance is designed to be at or near a different discrete resistance that the load is at or near for some other time.
16. An apparatus as described in claim 1 wherein each of the AC to DC converters has a different output resistance corresponding to an associated optimal load.
17. An apparatus as described in claim 1 wherein one of the AC to DC converters' input impedance is matched to a predetermined value at one power level, and another of the AC to DC converters' input impedance is matched to another predetermined value at a different power level.
18. An apparatus as described in claim 7 wherein the load is a battery to which each AC to DC converter is in electrical communication with and each AC to DC path is optimized for a specific input power level and load resistance.
19. An apparatus as described in claim 18 including a voltage monitoring circuit connected between the plurality of AC to DC converters and the battery and insures that a voltage level stays within a specified range.
20. An apparatus as described in claim 18 including a printed circuit board on which the plurality of AC to DC converters and the at least one first matching network are disposed.
21. An apparatus as described in claim 1 wherein the apparatus is included in an energy harvester that produces the electrical signal.
22. An apparatus as described in claim 21 wherein the energy harvester includes an antenna, a piezoelectric element, a solar cell, a generator, a vibration harvester, an acoustic harvester or a wind harvester.
23. An apparatus as described in claim 1 wherein at least one of the plurality of AC to DC converters is a single diode full wave rectifier.
24. An apparatus as described in claim 1 wherein at least one of the plurality of AC to DC converters is a single diode half wave rectifier.
25. An apparatus as described in claim 1 wherein at least one of the plurality of AC to DC converters is a voltage doubler.
26. An apparatus as described in claim 1 wherein the load includes at least one power storage element in electrical communication with at least one of the AC to DC converters.
27. An apparatus as described in claim 1 wherein the load is fixed at or near the optimal resistance, and the electrical signal provides an input power that is variable.
28. An apparatus as described in claim 1 wherein the load is variable and the electrical signal provides an input power that is fixed.
29. An apparatus as described in claim 1 wherein the load is variable and the electrical signal provides an input power that is variable.
30. A method for powering a load comprising the steps of:
  - receiving an electrical signal at an impedance matching network;
  - converting the signal at a plurality of AC to DC converters in communication with the impedance matching network; and
  - providing current to the load in communication with the plurality of AC to DC converters.
31. A method as described in claim 30 wherein the receiving step includes the step of receiving the electrical signal at a plurality of impedance matching networks in communication with the plurality of the AC to DC converters.
32. A method as described in claim 31 including the step of directing the signal with a selector.
33. A method as described in claim 32 wherein the selector is active or passive.

34. A method as described in claim 31 including the step of combining outputs from the plurality of AC to DC converters with a combiner connected to the load.

35. A method as described in claim 34 wherein the combiner is active or passive.

36. An apparatus for converting power comprising:

an energy harvester including at least one AC to DC converter which provides a conversion efficiency of an input signal of at least 50% for an input power range that covers at least 20 dB.

37. An apparatus as described in claim 36 wherein the energy harvester includes an antenna.

38. An apparatus as described in claim 36 wherein the energy harvester includes a piezoelectric element.

39. An apparatus for converting power comprising:

an energy harvester including at least one AC to DC converter which provides a conversion efficiency of an input signal of at least 50% for a resistive load range that covers at least 100 times a predetermined minimum value.

40. An apparatus for converting power comprising:

an energy harvester including at least one AC to DC converter which provides a conversion efficiency of an input signal of at least 50% when charging or recharging a charge storage device for an input power range that covers at least 20 dB.

41. An apparatus for converting power comprising means for harvesting an input signal including means for converting AC to DC which provides a conversion efficiency of the input signal of at least 50% when charging or recharging a charge storage device for an input power range that covers at least 20 dB.

42. An apparatus for converting power comprising:

at least two first impedance matching networks which receive an electrical signal;

at least one AC to DC converter in communication with the first impedance matching networks; and

a combiner in electrical communication with the first matching networks.

43. An apparatus as described in claim 42 wherein the combiner is a switch.

44. An apparatus for converting power comprising:

an energy harvester including at least one AC to DC converter;

at least two non-linear elements, wherein the at least two non-linear elements have different characteristics.

45. An apparatus as described in claim 44 wherein the at least two non-linear elements are one or more of diodes, mosfets, or transistors.

46. An apparatus as described in claim 44 wherein the different characteristics include different impedances or different resistances.

47. An apparatus for converting power comprising:

an energy harvester including at least one AC to DC converter which provides a conversion efficiency of an input signal having at least two peaks in efficiency.

48. An apparatus for converting power comprising:

an energy harvester including at least one AC to DC converter which provides a conversion efficiency having at least two peaks in efficiency versus load resistance.

49. An apparatus for converting power comprising:

an energy harvester including at least one AC to DC converter which provides a conversion efficiency having at least two peaks in efficiency versus output current.

50. An apparatus for converting power comprising:

an energy harvester including at least one AC to DC converter which provides a conversion efficiency of an input signal of at least 50% for a range from a predetermined distance to ten times the distance.

51. An apparatus for converting power comprising:

an energy harvester including at least one AC to DC converter configured to receive a first input power at a first distance with a first efficiency,

wherein the AC to DC converter receives a second input power at a second distance with a second efficiency,

the first distance is greater than the second distance, and the first efficiency is substantially similar to the second efficiency.

52. An apparatus as described in claim 51 wherein the first input power and the second input power are formed by pulses of power.

53. An apparatus for converting power comprising:

an energy harvester including at least one AC to DC converter which provides an input SWR of less than 2.0 for an input power range of at least 16 dB.

54. An apparatus for converting power comprising:

an energy harvester including at least one AC to DC converter which provides an input SWR of less than 2.0 for a resistive load range that covers at least 40 times a predetermined minimum value.

55. An apparatus as described in claim 1 wherein the load is an LED.

56. An apparatus for converting power comprising:

an energy harvester including at least one AC to DC converter wherein the output resistance of the AC to DC converter varies in response to changes in input power or load resistance.

57. The apparatus as described in claim 56 including a voltage monitoring circuit that insures that a voltage level stays within a specified range.

58. An apparatus for converting power comprising:

an input interface and at least one AC to DC converter which provides a conversion efficiency of an input signal of at least 50% for an input power range that covers at least 20 dB.

59. An apparatus as described in claim 58 wherein the AC to DC converter is used in an energy harvester.

60. An apparatus as described in claim 59 wherein the energy harvester includes an antenna.

61. An apparatus as described in claim 59 wherein the energy harvester includes a piezoelectric element.

62. An apparatus for converting power comprising:

an input interface and at least one AC to DC converter which provides a conversion efficiency of an input

signal of at least 50% for a resistive load range that covers at least 100 times a predetermined minimum value.

63. An apparatus for converting power comprising:

an input interface and at least one AC to DC converter which provides a conversion efficiency of an input signal of at least 50% when charging or recharging a charge storage device for an input power range that covers at least 20 dB.

64. An apparatus for converting power comprising:

an input interface and at least one AC to DC converter; at least two non-linear elements, wherein the at least two non-linear elements have different characteristics.

65. An apparatus as described in claim 64 wherein the at least two non-linear elements are one or more of diodes, mosfets, or transistors.

66. An apparatus as described in claim 64 wherein the different characteristics include different impedances or different resistances.

67. An apparatus for converting power comprising:

an input interface and at least one AC to DC converter which provides a conversion efficiency of an input signal having at least two peaks in efficiency.

68. An apparatus for converting power comprising:

an input interface and at least one AC to DC converter which provides a conversion efficiency having at least two peaks in efficiency versus load resistance.

69. An apparatus for converting power comprising:

an input interface and at least one AC to DC converter which provides a conversion efficiency having at least two peaks in efficiency versus output current.

70. An apparatus for converting power comprising:

an input interface and at least one AC to DC converter which provides a conversion efficiency of an input

signal of at least 50% for a range from a predetermined distance to ten times the distance.

71. An apparatus for converting power comprising:

an input interface and at least one AC to DC converter configured to receive a first input power at a first distance with a first efficiency,

wherein the AC to DC converter receives a second input power at a second distance with a second efficiency,

the first distance is greater than the second distance, and

the first efficiency is substantially similar to the second efficiency.

72. An apparatus as described in claim 71 wherein the first input power and the second input power are formed by pulses of power.

73. An apparatus for converting power comprising:

an input interface and at least one AC to DC converter which provides an input SWR of less than 2.0 for an input power range of at least 16 dB.

74. An apparatus for converting power comprising:

an input interface and at least one AC to DC converter which provides an input SWR of less than 2.0 for a resistive load range that covers at least 40 times a predetermined minimum value.

75. An apparatus for converting power comprising:

an input interface and at least one AC to DC converter wherein the output resistance of the AC to DC converter varies in response to changes in input power or load resistance.

76. The apparatus as described in claim 75 including a voltage monitoring circuit that insures that a voltage level stays within a specified range.

\* \* \* \* \*

## FURTHER READING

Click any one of the following links to be taken to a website which contains the following documents.

There appears to be a lot of recent patent activity in the area of building "bridgeless PFC convertors". The following are some of the patents.

[11\\_584\\_983\\_Method\\_and\\_apparatus\\_for\\_high\\_efficiency\\_rectifier](#)  
[11\\_204\\_307\\_AC\\_to\\_DC\\_power\\_supply\\_with\\_PF](#)  
[11\\_302\\_544\\_Simple\\_partial\\_switching\\_power\\_factor\\_correction](#)  
[11\\_474\\_712\\_BRIDGELESS\\_BI\\_DIRECTIONAL\\_FORWARD\\_TYPE\\_CONVERTER](#)  
[11\\_480\\_004\\_High\\_efficiency\\_power\\_converter\\_system](#)  
[11\\_706\\_645\\_AC\\_to\\_DC\\_voltage\\_converter\\_as\\_power\\_supply](#)  
[12\\_401\\_983\\_BRIDGELESS\\_PFC\\_CIRCUIT\\_FOR\\_CRM](#)  
[12\\_798\\_682\\_Bridgeless\\_PFC\\_converter](#)

[3295043\\_MASSEY\\_D\\_C\\_TO\\_D\\_C\\_REGULATED\\_CONVERTER](#)  
[4183079\\_DC\\_AC\\_inverter](#)  
[4523266\\_AC\\_to\\_DC\\_conversion\\_system](#)  
[4943902\\_AC\\_to\\_DC\\_power\\_converter\\_and\\_method](#)  
[5570276\\_Switching\\_converter\\_with\\_open\\_loop\\_input\\_regulation](#)  
[5815380\\_Switching\\_converter\\_with\\_open\\_loop\\_Primary\\_regulation](#)  
[5815384\\_Transformer\\_uses\\_bi\\_directional\\_synch\\_Rectifiers](#)  
[6115267\\_AC\\_DC\\_converter\\_with\\_no\\_input\\_rectifiers](#)  
[6157182\\_DC\\_DC\\_converter\\_with\\_multiple\\_operating\\_modes](#)  
[6608522\\_DC\\_to\\_DC\\_converter\\_providing\\_stable\\_operation](#)  
[7250742\\_Digital\\_control\\_of\\_bridgeless\\_power\\_factor\\_correction](#)  
[7265591\\_CMOS\\_driver\\_with\\_minimum\\_shoot\\_through](#)

And here is some more information for those who may be interested.

[A BIDIRECTIONAL PWM THREE-PHASE STEP-DOWN RECTIFIER](#)  
[A bidirectional, sinusoidal, high-frequency inverter](#)  
[A DUAL INPUT BIDIRECTIONAL POWER CONVERTER](#)  
[A new structure for bidirectional Power flow](#)  
[BI-DIRECTIONAL INVERTER-CHARGER](#)  
[Bi-directional single-phase half-bridge rectifier for power quality](#)  
[BiDirectional Converter](#)  
[Bidirectional UP Inverter](#)  
[Synthesis of Input-Rectifierless AC/DC](#)

11.28.10 10.11AM  
dsauersanjose@aol.com  
Don Sauer  
<http://www.idea2ic.com/>